

APPENDIX C.
Public Meeting Presentations

PUBLIC MEETING ONE

APRIL 28, 2022

SOUTH WHITEHALL TOWNSHIP, LEHIGH COUNTY, PA

PARK, RECREATION, OPEN SPACE AND TRAIL PLAN UPDATE (PROT)



Introductions



Bryan Smith
Chief Landscape Architect



Stephanie Milewski
Project Manager



Lindsay Taylor
Certified Park and Recreation Planner



Ashley Eichlin
Project Technician

COMMITTEE

Randy Cope
Director of Operations

Mike Kukitz
Manager Parks and Recreation

Diane Kelly
Board of Commissioners, President

Monica Hodges
Board of Commissioners, Assistant Secretary

David Manhardt
Director of Community Development

Mark Ackerman
Park and Recreation Board Member



Agenda

- a. Introduction
- b. What is PROT
- c. Fun Facts
- d. Planning Process
- e. Overview of Township Parks
- f. What is NRPA/Park Matrix
- g. Questionnaire
- h. Interactive Mapping/boards
- i. Q&A



What is a PROT?

What is a park recreation open space and trail plan PROT?

A park system that is vital to the health, equality, and resiliency of a community, and is an indicator for a resident's quality of life. Through visioning, condition assessment, needs and planning, the PROT gathers community input to understand facilities and experiences sought to be fit, be inspired and be well.

This 9-month process results in a report, policy makers use to make decisions on how to spend funds on outdoor public resources for the next decade, including acquisition, improvements, maintenance, and programming.

SWT previous plan from 2009 was in combination with North Whitehall Township

**Live voting – with text
messaging.**

Respond at either:
PolIEV.com/barryisettas695
Or Text **BARRYISETTAS695** to
22333

Fun Facts



Fun Facts



< SWT-PROT_PM#1



Visual settings



Edit



When poll is active, respond at PollEv.com/barryisettas695

Text **BARRYISETTAS695** to **22333** once to join



In what year was the first, officially recorded public open space in America created?

1901

1812

1775

1634



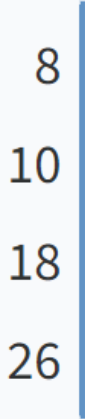
Fun Facts

SWT-PROT_PM#1

Visual settings Edit

When poll is active, respond at PollEv.com/barryisettas695
Text **BARRYISETTAS695** to **22333** once to join

How many parks are in South Whitehall Township?



Count
8
10
18
26



Fun Facts

SWT-PROT_PM#1

Visual settings Edit

When poll is active, respond at PollEv.com/barryisettas695
Text **BARRYISETTAS695** to **22333** once to join

Why are parks important to Township residents because according to the LVPC, the average premium for homes in Lehigh County located within 1/4 mile of protected open space is what?

\$1,900.00
\$5,900.00
\$10,500.00
\$13,900.00



Fun Facts

SWT-PROT_PM#1

Visual settings Edit

When poll is active, respond at PollEv.com/barryisettas695
Text **BARRYISETTAS695** to **22333** once to join

How many boards make up the boardwalk along the Jordan Creek Trail?

1,000
5,000
10,000
I don't know.



Planning Process

BACKGROUND INFORMATION

MISSION, GOALS, & OBJECTIVES

ADMINISTRATION

PERSONNEL

FACILITY/OPEN SPACE INVENTORY & ANALYSIS

FACILITY/EQUIPMENT MAINTENANCE

RECREATION PROGRAMS

FINANCING

RECOMMENDATIONS
& COST ESTIMATES

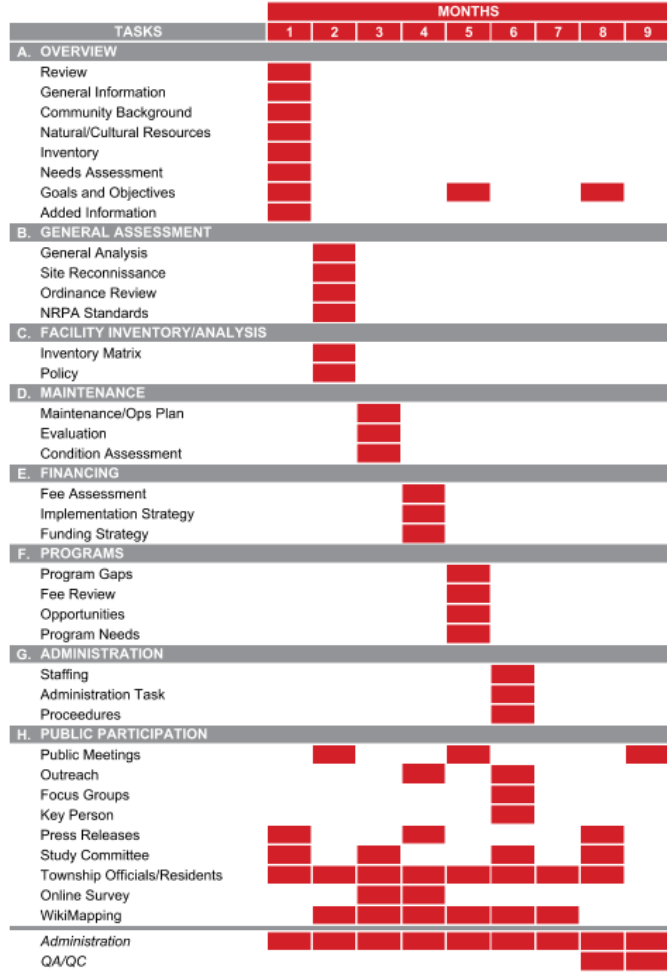
GRANTSMANSHIP

PROJECT START

IMPLEMENTATION



Schedule



Be involved!

Most important part of this process is
YOU.
Community engagement is key to the
plan's recommendations.



Multiple community engagement opportunities:

- Attending this meeting and other public meetings
- Completing the community survey
- Engaging in our popup events
- Reviewing and commenting on the report
- Contacting the team with questions/comments
- Spreading the word about this process...getting your neighbors involved.

Township Parks

POCKET PARK

- Bungalow Park
- Cedar Creek Farms
- Dev on Circle Park
- Fernwood Park
- Grandlawn Park
- Grove Street Park
- Hampshire Court Park
- Jacoby Park
- Martha Nolan Memorial Park
- South Whitehall Chase Park
- Spring Valley Estates
- Springhouse West Park
- The Vistas Park
- The Vistas Playground
- Winchester Heights Park

TOTAL ACRES: 41+

COMMUNITY PARKS

- Covered Bridge Park
- Jordan Greenway
- Kohler Ridge Park

TOTAL ACRES: 190 +

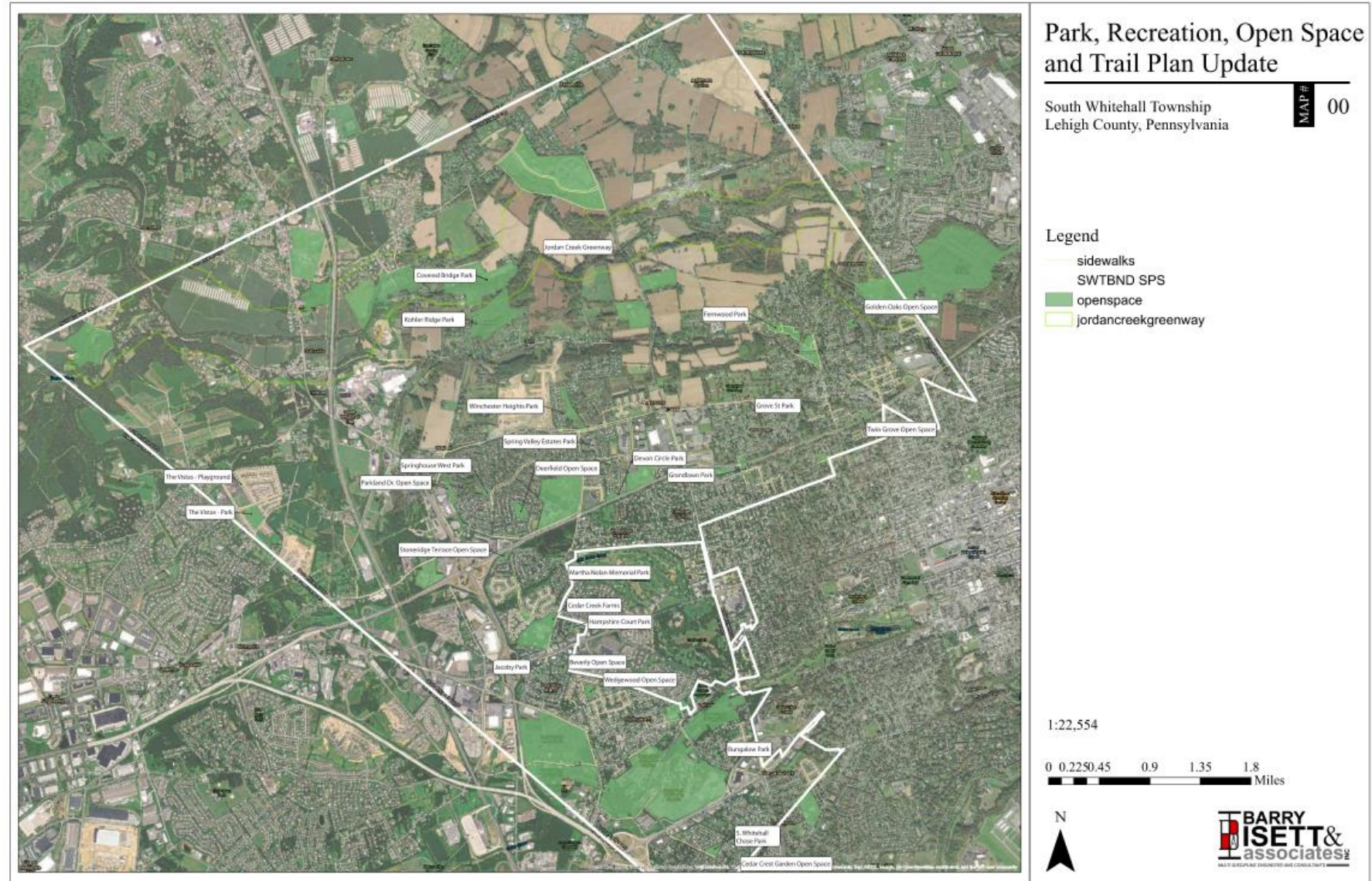
OPEN SPACE

- Beverly
- Cedar Crest Gardens
- Deerfield
- Golden Oaks
- Parkland Drive
- Stoneridge Terrace
- Twin Grove
- Wedgewood

TOTAL ACRES: 20 +

26 Township Parks

Where is your closest park?



Park Matrix

NRPA PARK MATRIX & ANALYSIS



Park	Acres	Year Acquired	Playground 5-12 YO	Playground 2-5 YO	Tennis	Volleyball	Basketball	Baseball	Softball	Batting cages	Soccer	Hockey	Bocce ball	Horseshoes	Skatepark	Dog Park	BMX Park	Walking Trail	Pavilion - open air	Benches	Picnic tables	Game tables	Cooking Grills	Trash receptacles	Water station	Lighting	Restrooms	Bike rack	Storage shed	Concession stand	Natural Area	Pond / Lake	Camera	
POCKET PARKS																																		
Bungalow Park	0.70	●					●														●	●		●										
Cedar Creek Farms Park	3.67													●																				
Devon Circle Park	2.32	●																			●	●		●										
Fernwood Park	10.00	●	●				●											●			●													
Grandlawn Park	2.78	●	●					●													●	●												
Grove Street Park	0.50	●	●																		●	●		●										
Hampshire Court Prk	1.00	●	●				●														●	●		●										
Jacoby Park	1.40	●	●				●														●	●												
Martha Nolan Memorial Park	0.60	●	●				●														●	●		●										
S. Whitehall Chase Park	2.40	●	●				●														●	●												
Springhouse West Park	1.70	●																			●	●		●										
Spring Valley Estates Park	1.17													●					●		●													
The Vistas - Park	7.63						●				●																							
The Vistas - Playground	0.40	●	●																															
Winchester Heights Park	5.00			●																	●	●												

Conditions

- Excellent ●
- Good ●
- Fair ●
- Poor ●

QUESTIONS



< SWT-PROT_PM#1

Visual settings

Edit

When poll is active, respond at Pollev.com/barryisettas695

Text **BARRYISETTAS695** to **22333** once to join

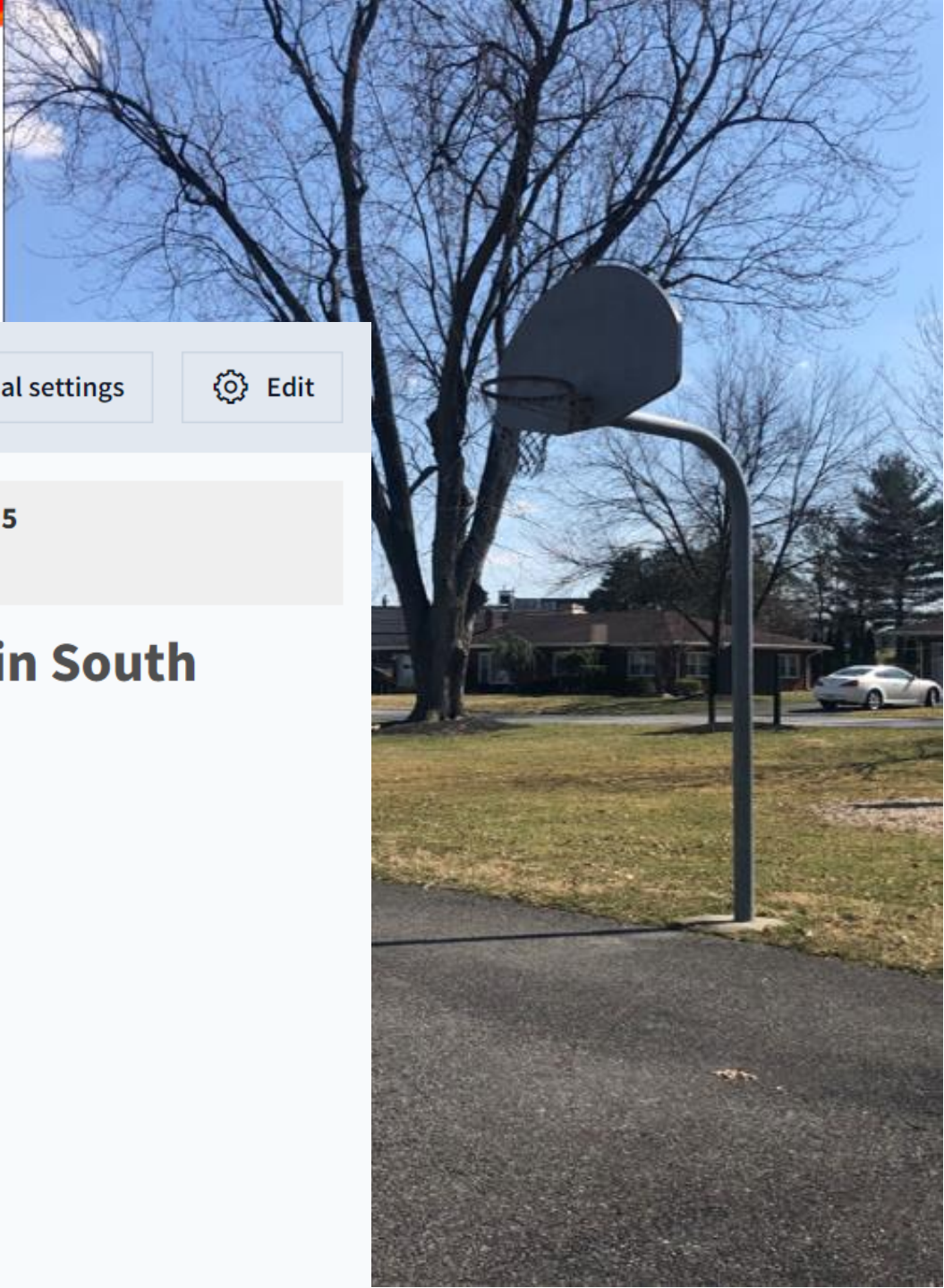
**When was the last time you visited a park in South
Whitehall Township?**

Within this past week.

Within this past month.

Within this past year.

Never



QUESTIONS



< SWT-PROT_PM#1



Visual settings



Edit



🌐 When poll is active, respond at PolleEv.com/barryisettas695

📧 Text **BARRYISETTAS695** to **22333** once to join

When you go to a park, typically which activity prompted your visit?

Trail use. (For example: Walking, Running, Jogging, etc)

Sport or active recreational activity (For example: baseball, soccer, basketball, disc golf, etc)

Passive activity (For example: bird watching, resting, picnicking, fishing, etc)

Attend a program or event (concert, fishing derbe, etc)

Playground



QUESTIONS



< SWT-PROT_PM#1



Visual settings



Edit

🌐 When poll is active, respond at Pollev.com/barryisettas695

📧 Text **BARRYISETTAS695** to **22333** once to join

When you go to a park, typically which activity prompted your visit?

Trail use. (For example: Walking, Running, Jogging, etc)

Sport or active recreational activity (For example: baseball, soccer, basketball, disc golf, etc)

Passive activity (For example: bird watching, resting, picnicking, fishing, etc)

Attend a program or event (concert, fishing derbe, etc)

Playground

QUESTIONS



< SWT-PROT_PM#1



Visual settings



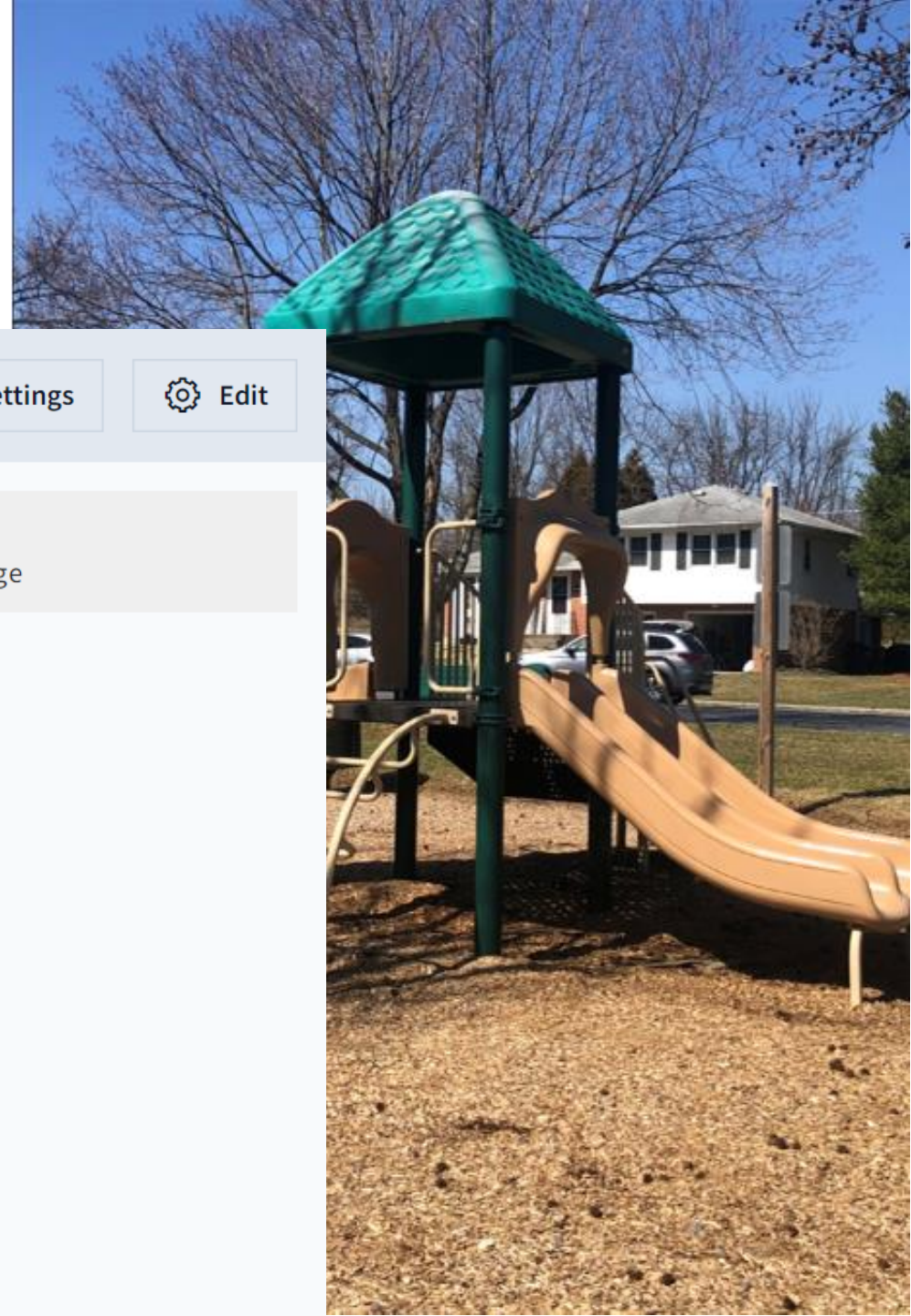
Edit

Respond at Pollev.com/barryisettas695

Text **BARRYISETTAS695** to **22333** once to join, then text your message

Which park did you visit last?

bungalow
covered
answer
bridge
wedgwood
second
park



QUESTIONS



< SWT-PROT_PM#1



Visual settings



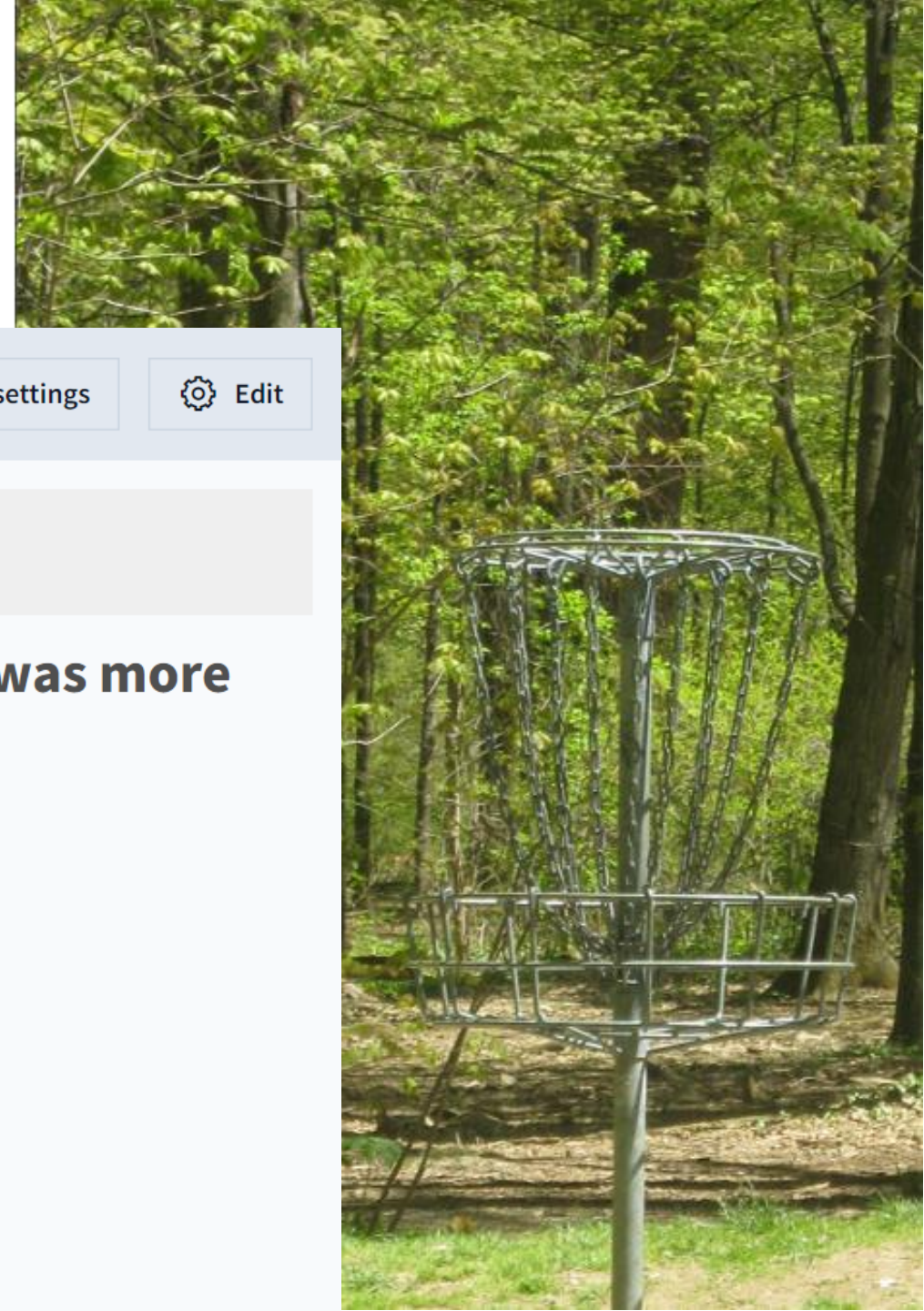
Edit

🌐 When poll is active, respond at PolleEv.com/barryisettas695

📧 Text **BARRYISETTAS695** to **22333** once to join

What activity/park improvement do you wish was more available?

🌞 No responses received yet. They will appear here...



QUESTIONS



< SWT-PROT_PM#1



Visual settings



Edit

🌐 When poll is active, respond at PolleEv.com/barryisettas695

📧 Text **BARRYISETTAS695** to **22333** once to join

What age group do you belong to?

0-12

13-18

19-25

26-40

41-63

64-older





Next Steps...

Interactive Boards

Complete the survey (paper or online) in May

Save the date...Next Public Meeting **June 23**

Q & A



05/02/2013

05/02/2013

CONTACT INFORMATION

Thank you...

Updates and Contact information:

South Whitehall Township Website: www.southwhitehall.com

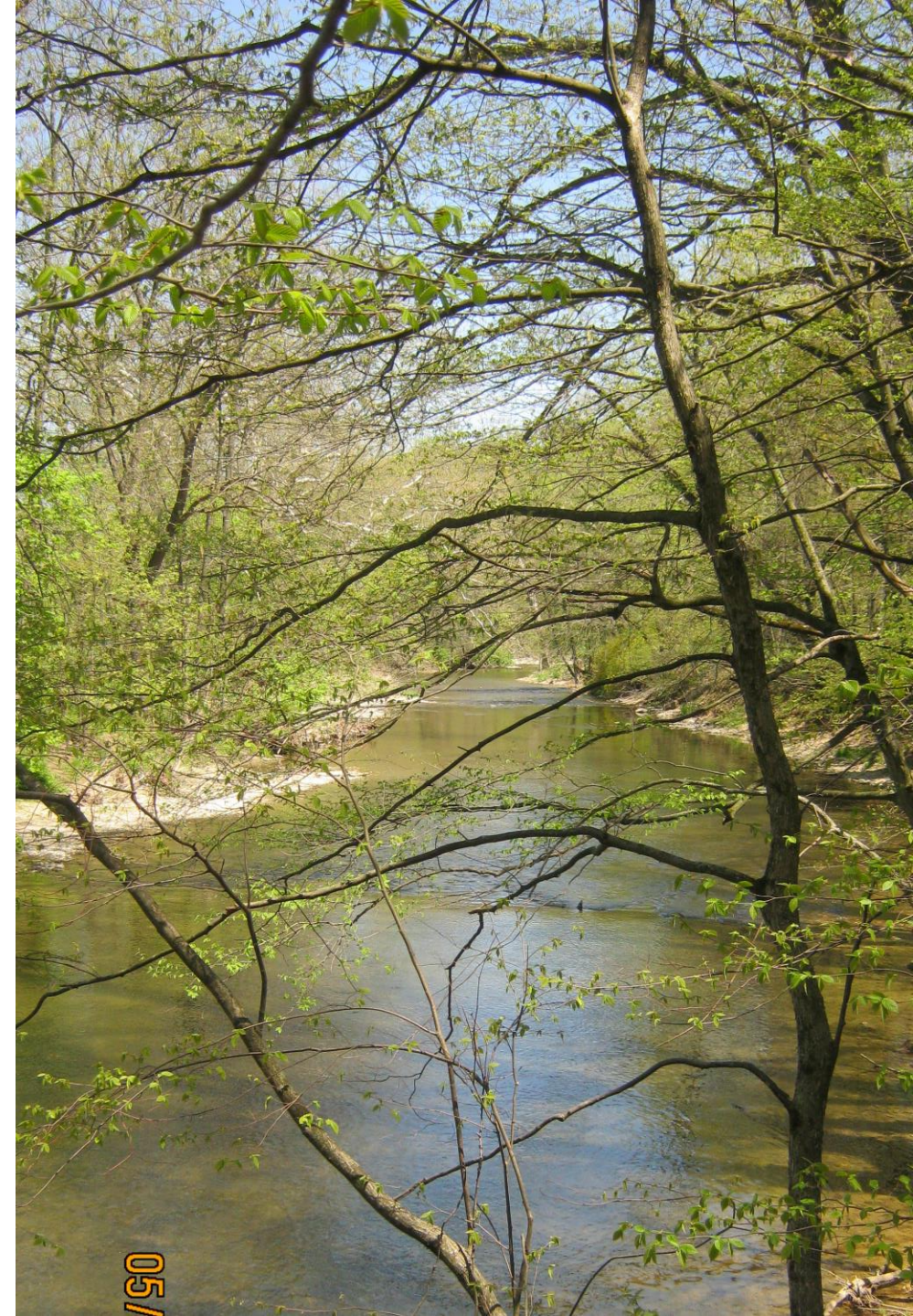
Park and Recreation Director:

Mike Kukitz, kukitzm@southwhitehall.com 610-398-0401

Consultant Team:

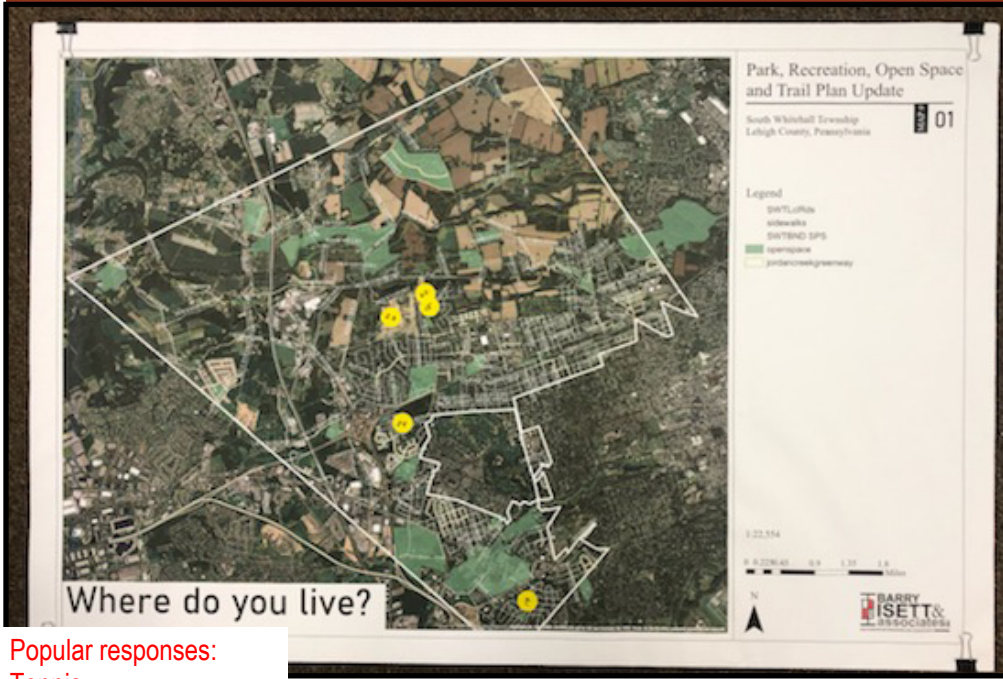
Bryan Smith, bsmith@barryisett.com 610-398-0904

Ashley Eichlin, aeichlin@barryisett.com



PUBLIC MEETING #1

SOUTH WHITEHALL TOWNSHIP PARK, RECREATION, OPEN SPACE, AND TRAIL PLAN



- Popular responses:
- Tennis
 - Walking
 - Historic Preservation
 - Picnicking
 - Community Gardening
 - Dog Walking
 - Biking
 - Playgrounds
 - Hiking



Parks commonly visited:
Covered Bridge Park
Winchester Heights Park
S. Whitehall Chase Park

- Popular responses:
- Tennis
 - Pickleball
 - Walking
 - Historic Preservation
 - Picnicking
 - Dog Walking
 - Biking
 - Hiking

South Whitehall Township
Park, Recreation, Open Space, and Trail Plan

What activities do you currently engage in at SWT parks, recreation, open space, and trails?

baseball/softball	playgrounds	basketball	walking	hiking	wildlife observation
soccer	tennis	lacrosse	historic preservation	running/jogging	fishing
football	hockey	dog walking	biking	picnicking	community garden

BOARD #3 APRIL 28, 2022 PUBLIC MEETING #1

South Whitehall Township
Park, Recreation, Open Space, and Trail Plan

What activities would you like to see in SWT parks, recreation, open space, and trails?

baseball/softball	playgrounds	basketball	walking	hiking	wildlife observation	other: pickleball frisbee pickleball
soccer	tennis	lacrosse	historic preservation	running/jogging	fishing	*
football	hockey	dog parks/dog walking	biking	picnicking	community garden	*

BOARD #4 APRIL 28, 2022 PUBLIC MEETING #1

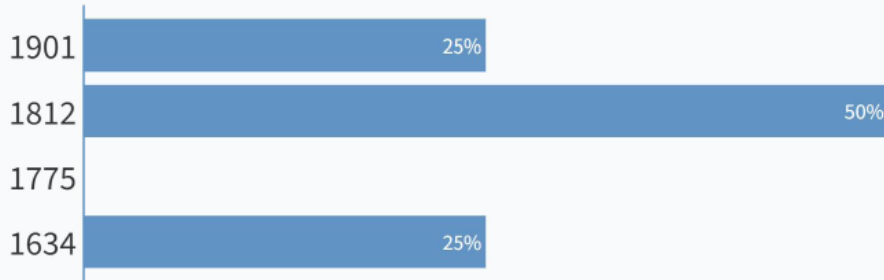
PUBLIC MEETING #1

SOUTH WHITEHALL TOWNSHIP PARK, RECREATION, OPEN SPACE, AND TRAIL PLAN



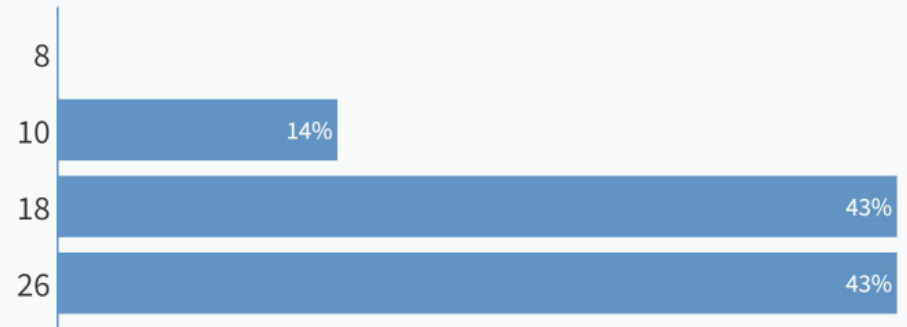
When poll is active, respond at PollEv.com/barryisettas695
Text **BARRYISETTAS695** to **22333** once to join

In what year was the first, officially recorded public open space in America created?



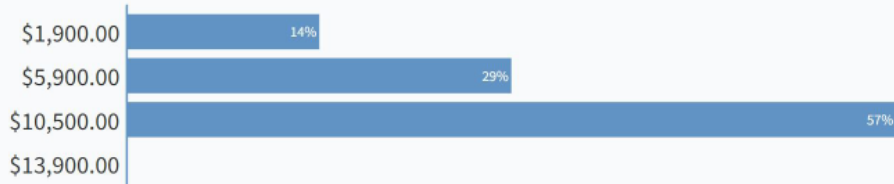
When poll is active, respond at PollEv.com/barryisettas695
Text **BARRYISETTAS695** to **22333** once to join

How many parks are in South Whitehall Township?



When poll is active, respond at PollEv.com/barryisettas695
Text **BARRYISETTAS695** to **22333** once to join

One reason why parks are important to Township residents is because according to the LVPC, the average premium for homes in Lehigh County located within 1/4 mile of protected open space is what?



When poll is active, respond at PollEv.com/barryisettas695
Text **BARRYISETTAS695** to **22333** once to join

How many boards make up the boardwalk along the Jordan Creek Trail?



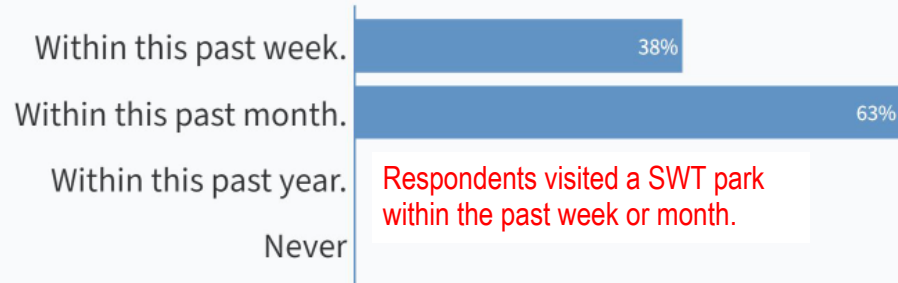
PUBLIC MEETING #1

SOUTH WHITEHALL TOWNSHIP PARK, RECREATION, OPEN SPACE, AND TRAIL PLAN



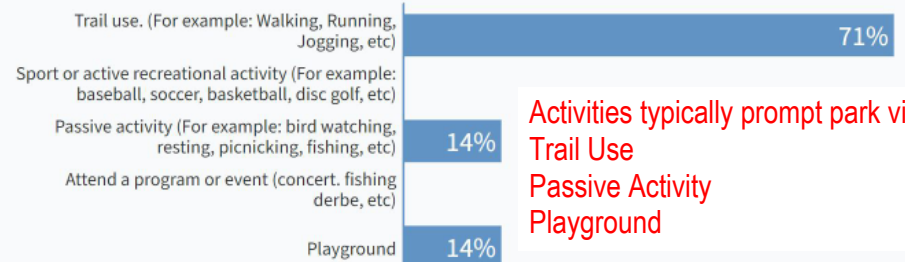
When poll is active, respond at [PollEv.com/barryisettas695](https://www.poll-ev.com/barryisettas695)
Text **BARRYISETTAS695** to **22333** once to join

When was the last time you visited a park in South Whitehall Township?



When poll is active, respond at [PollEv.com/barryisettas695](https://www.poll-ev.com/barryisettas695)
Text **BARRYISETTAS695** to **22333** once to join

When you go to a park, typically which activity prompted your visit?



When poll is active, respond at [PollEv.com/barryisettas695](https://www.poll-ev.com/barryisettas695)
Text **BARRYISETTAS695** to **22333** once to join

Which park did you visit last?



- Parks represented:
- South Whitehall Chase Park
 - Martha Nolan Memorial Park
 - Winchester Heights Park
 - Covered Bridge Park
 - Springhouse West Park

When poll is active, respond at [PollEv.com/barryisettas695](https://www.poll-ev.com/barryisettas695)
Text **BARRYISETTAS695** to **22333** once to join

What activity/park improvement do you wish was more available?



- Popular responses:
- Pickleball
 - Dog Park

PUBLIC MEETING #1

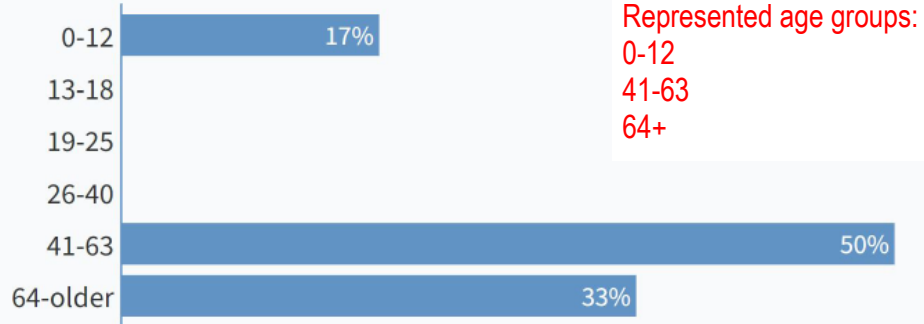
SOUTH WHITEHALL TOWNSHIP PARK, RECREATION, OPEN SPACE, AND TRAIL PLAN



When poll is active, respond at [PollEv.com/barryisettas695](https://poll-ev.com/barryisettas695)

Text **BARRYISETTAS695** to **22333** once to join

What age group do you belong to?



PUBLIC MEETING II

JUNE 23, 2022

SOUTH WHITEHALL TOWNSHIP, LEHIGH COUNTY, PA

PARK, RECREATION, OPEN SPACE AND TRAIL PLAN UPDATE (PROT)



Introductions



Bryan Smith
Chief Landscape Architect



Stephanie Milewski
Project Manager



Lindsay Taylor
Certified Park and Recreation Planner



Ashley Eichlin
Project Technician

COMMITTEE

Randy Cope
Director of Operations

Mike Kukitz
Manager Parks and Recreation

Diane Kelly
Board of Commissioners, President

Monica Hodges
Board of Commissioners, Assistant Secretary

David Manhardt
Director of Community Development

Mark Ackerman
Park and Recreation Board Member



Agenda

- a. Review PROT Plan Process
- b. Township Parks Review
- c. Community Input
- d. NRPA/Park Matrix
- e. Survey Update
- f. Q&A



What is a PROT?

What is a park recreation open space and trail plan PROT?

A park system that is vital to the health, equality, and resiliency of a community, and is an indicator for a resident's **quality of life**. Through visioning, condition assessment, needs and planning, the PROT **gathers community input** to understand facilities and experiences sought to be fit, be inspired and be well.

This 9-month process results in a report, policy makers use to make decisions on how to spend funds on outdoor public resources for the **next decade**, including **acquisition, improvements, maintenance, and programming**.

SWT previous plan from 2009 was in combination with North Whitehall Township



**WHAT HAVE WE
BEEN UP TO?**

Planning Process

BACKGROUND INFORMATION

MISSION, GOALS, & OBJECTIVES

ADMINISTRATION

PERSONNEL

FACILITY/OPEN SPACE INVENTORY & ANALYSIS



FACILITY/EQUIPMENT MAINTENANCE

RECREATION PROGRAMS

FINANCING

RECOMMENDATIONS
& COST ESTIMATES

GRANTSMANSHIP

PROJECT START

IMPLEMENTATION



Township Parks

POCKET PARK

Bungalow Park
Cedar Creek Farms
Devon Circle Park
Fernwood Park
Grandlawn Park
Grove Street Park
Hampshire Court Park
Jacoby Park
Martha Nolan Memorial Park
South Whitehall Chase Park
Spring Valley Estates
Springhouse West Park
The Vistas Park
The Vistas Playground
Winchester Heights Park

TOTAL ACRES: 41+

COMMUNITY PARKS

Covered Bridge Park

TRAILS

Jordan Greenway

TOTAL ACRES: 165 +

OPEN SPACE

Beverly
Cedar Crest Gardens
Deerfield
Davis-Smith
Golden Oaks
Kohler Ridge Park
Parkland Drive
Stoneridge Terrace
Twin Grove
Wedgewood

TOTAL ACRES: 45 +

26 Township Parks

Township Parks

POCKET PARK

Bungalow Park
Cedar Creek Farms
Devon Circle Park
Fernwood Park
Grandlawn Park
Grove Street Park
Hampshire Court Park
Jacoby Park
Martha Nolan Memorial Park
South Whitehall Chase Park
Spring Valley Estates
Springhouse West Park
The Vistas Park
The Vistas Playground
Winchester Heights Park

TOTAL ACRES: 41+

COMMUNITY PARKS

Covered Bridge Park

TRAILS

Jordan Greenway

TOTAL ACRES: 165 +

OPEN SPACE

Beverly
Cedar Crest Gardens
Davis-Smith
Deerfield
Golden Oaks
Kohler Ridge Park
Parkland Drive
Stoneridge Terrace
Twin Grove
Wedgewood

TOTAL ACRES: 45 +

26 Township Parks

**Live voting – with text
messaging.**

Respond at either:
Pollev.com/barryisettas695
Or Text **BARRYISETTAS695** to
22333



**WE WANT
YOUR
FEEDBACK**

BUNGALOW PARK



Park Location: 3530 Fairview Street
Allentown, PA 18104

Park Size: 1.20 acres

Items Inventoried: seating (benches and picnic table), trash receptacles, basketball court, on-street parking, playground equipment (2-5, 5-12), open lawn

Observations:

- Safety surface – mulch
- Equipment meets ADA compliance
- Needs more paved walkways





< SWT-PROT_PM#2



Visual settings



Edit



🌐 When poll is active, respond at PollEv.com/barryisettas695

📧 Text **BARRYISETTAS695** to **22333** once to join

Have you visited Bungalow Park?

Yes

No



< SWT-PROT_PM#2



Visual settings



Edit



🌐 When poll is active, respond at PollEv.com/barryisettas695

📧 Text **BARRYISETTAS695** to **22333** once to join

What do you like about Bungalow Park?



No responses received yet. They will appear here...



< SWT-PROT_PM#2



Visual settings



Edit



🌐 When poll is active, respond at PollEv.com/barryisettas695

📱 Text **BARRYISETTAS695** to **22333** once to join

What can be improved at Bungalow Park?



No responses received yet. They will appear here...

CEDAR CREEK FARMS PARK



Park Location: 800 Parkway Road
Allentown, PA 18104

Park Size: 3.67 acres

Items Inventoried: Soccer/Multipurpose fields,
On-street parking

Observations:

- Buffer between residences and park
- Needs more parking





< SWT-PROT_PM#2



Visual settings



Edit



🌐 When poll is active, respond at PollEv.com/barryisettas695

📧 Text **BARRYISETTAS695** to **22333** once to join

Have you visited Cedar Creek Farms Park?

Yes

No



< SWT-PROT_PM#2



Visual settings



Edit



🌐 When poll is active, respond at PollEv.com/barryisettas695

📱 Text **BARRYISETTAS695** to **22333** once to join

What do you like about Cedar Creek Farms Park?



No responses received yet. They will appear here...



< SWT-PROT_PM#2



Visual settings



Edit



🌐 When poll is active, respond at PollEv.com/barryisettas695

📱 Text **BARRYISETTAS695** to **22333** once to join

What can be improved at Cedar Creek Farms Park?



No responses received yet. They will appear here...

DEVON CIRCLE PARK

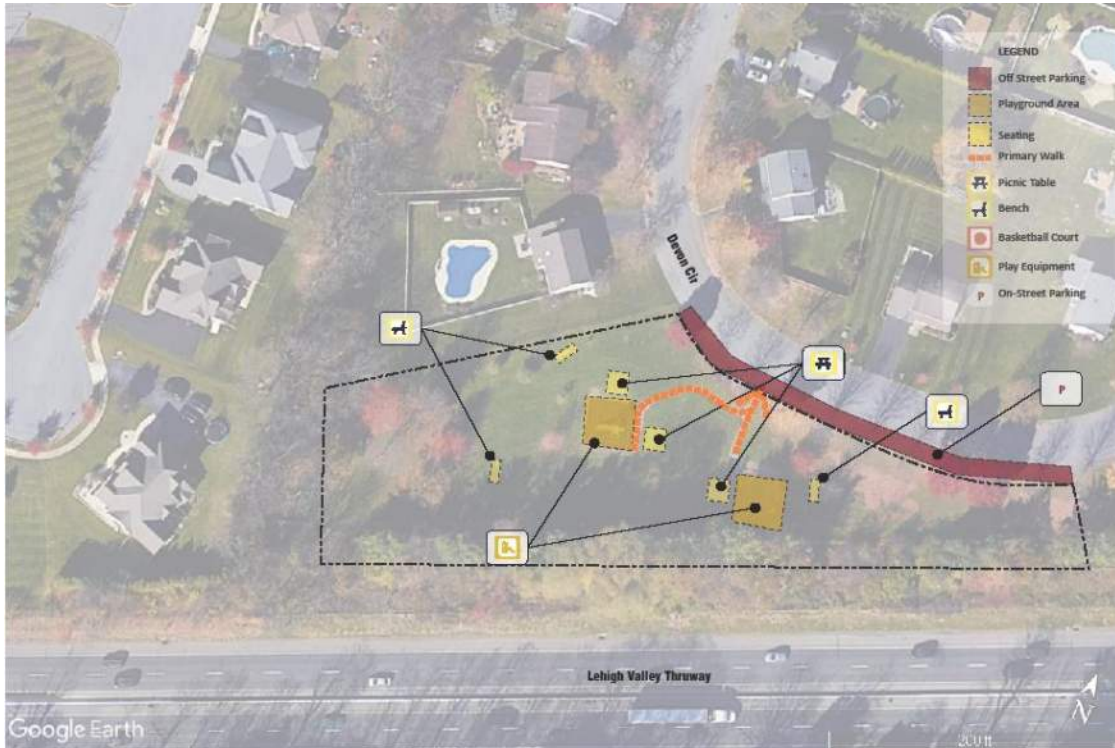
Park Location: 1350 Devon Circle
Allentown, PA 18104

Park Size: 2.32 acres

Items Inventoried: Playground equipment (5-12), seating (benches and picnic tables), trash receptacles, lawn, on-street parking

Observations:

- Safety surface – tiles/mulching
- Road noise levels





< SWT-PROT_PM#2



Visual settings



Edit



🌐 When poll is active, respond at PollEv.com/barryisettas695

📧 Text **BARRYISETTAS695** to **22333** once to join

Have you visited Devon Circle Park?

Yes

No



< SWT-PROT_PM#2



Visual settings



Edit



🌐 When poll is active, respond at PollEv.com/barryisettas695

📧 Text **BARRYISETTAS695** to **22333** once to join

What do you like about Devon Circle Park?

🌻 No responses received yet. They will appear here...



< SWT-PROT_PM#2



Visual settings



Edit



🌐 When poll is active, respond at PollEv.com/barryisettas695

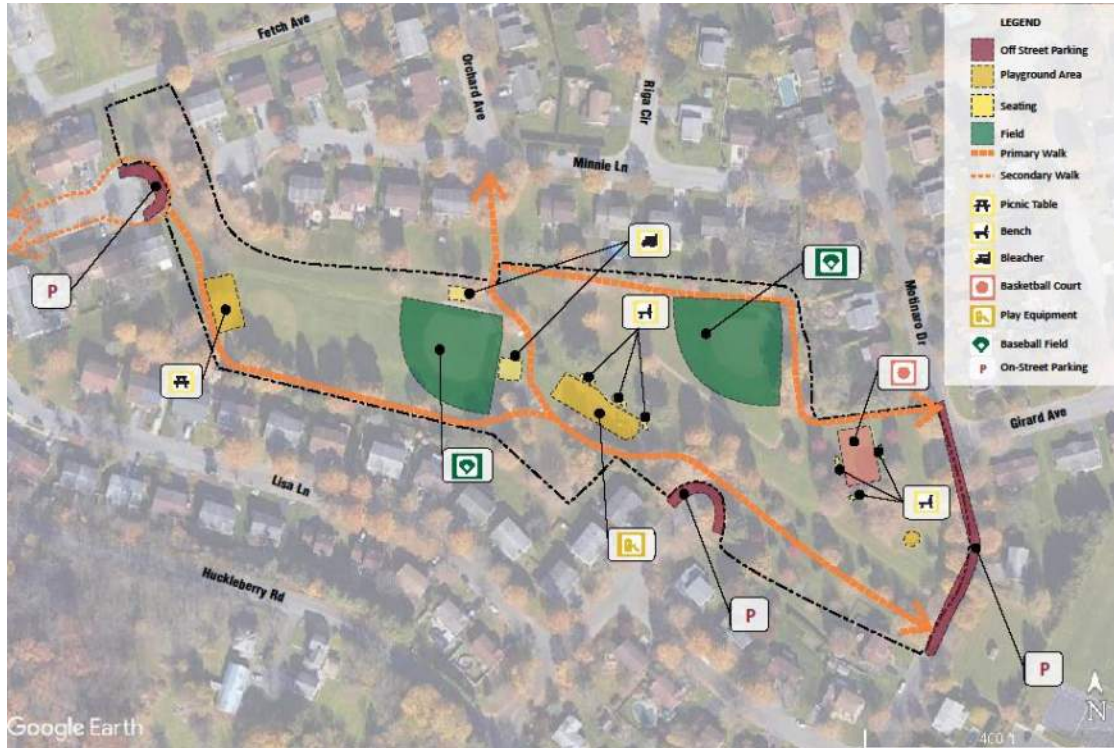
📧 Text **BARRYISETTAS695** to **22333** once to join

What can be improved at Devon Circle Park?



No responses received yet. They will appear here...

FERNWOOD PARK



Park Location: 1900 Molinaro Drive
Allentown, PA 18104

Park Size: 10.0 acres

Items Inventoried: tee ball fields, basketball court, playground equipment (2-5, 5-12), gaga ball pit, walking trail, seating, lighting, lawn, on-street parking

Observations:

- Walkways need repair
- Safety surface – mulch
- Basketball court needs resurfacing





< SWT-PROT_PM#2



Visual settings



Edit



🌐 When poll is active, respond at PollEv.com/barryisettas695

📧 Text **BARRYISETTAS695** to **22333** once to join

Have you visited Fernwood Park?

Yes

No



< SWT-PROT_PM#2



Visual settings



Edit



🌐 When poll is active, respond at PollEv.com/barryisettas695

📧 Text **BARRYISETTAS695** to **22333** once to join

What do you like about Fernwood Park?



No responses received yet. They will appear here...



< SWT-PROT_PM#2



Visual settings



Edit



🌐 When poll is active, respond at PollEv.com/barryisettas695

📧 Text **BARRYISETTAS695** to **22333** once to join

What can be improved at Fernwood Park?



No responses received yet. They will appear here...

GRANDLAWN PARK

Park Location: 1337 N. 28th Street
Allentown, PA 18104

Park Size: 2.78 acres

Items Inventoried: Baseball/softball field, playground equipment, basketball court, seating, restroom, on-street parking

Observations:

- Trash at basketball court
- Need walkway access to basketball court
- Netting at baseball/softball field





< SWT-PROT_PM#2



Visual settings



Edit



🌐 When poll is active, respond at PollEv.com/barryisettas695

📧 Text **BARRYISETTAS695** to **22333** once to join

Have you visited Grandlawn Park?

Yes

No



< SWT-PROT_PM#2



Visual settings



Edit



🌐 When poll is active, respond at PollEv.com/barryisettas695

📧 Text **BARRYISETTAS695** to **22333** once to join

What do you like about Grandlawn Park?



No responses received yet. They will appear here...



< SWT-PROT_PM#2



Visual settings



Edit



🌐 When poll is active, respond at PollEv.com/barryisettas695

📧 Text **BARRYISETTAS695** to **22333** once to join

What can be improved at Grandlawn Park?

🌻 No responses received yet. They will appear here...

GROVE STREET PARK

Park Location: 2329 Grove Street
Allentown, PA 18104

Park Size: 0.50 acres

Items Inventoried: Playground equipment, off-street parking, seating, walking paths

Observations:
- Safety surface – Mulch





< SWT-PROT_PM#2



Visual settings



Edit



🌐 When poll is active, respond at PollEv.com/barryisettas695

📧 Text **BARRYISETTAS695** to **22333** once to join

Have you visited Grove Street Park?

Yes

No



< SWT-PROT_PM#2



Visual settings



Edit



🌐 When poll is active, respond at PollEv.com/barryisettas695

📧 Text **BARRYISETTAS695** to **22333** once to join

What do you like about Grove Street Park?



No responses received yet. They will appear here...



< SWT-PROT_PM#2



Visual settings



Edit



🌐 When poll is active, respond at PollEv.com/barryisettas695

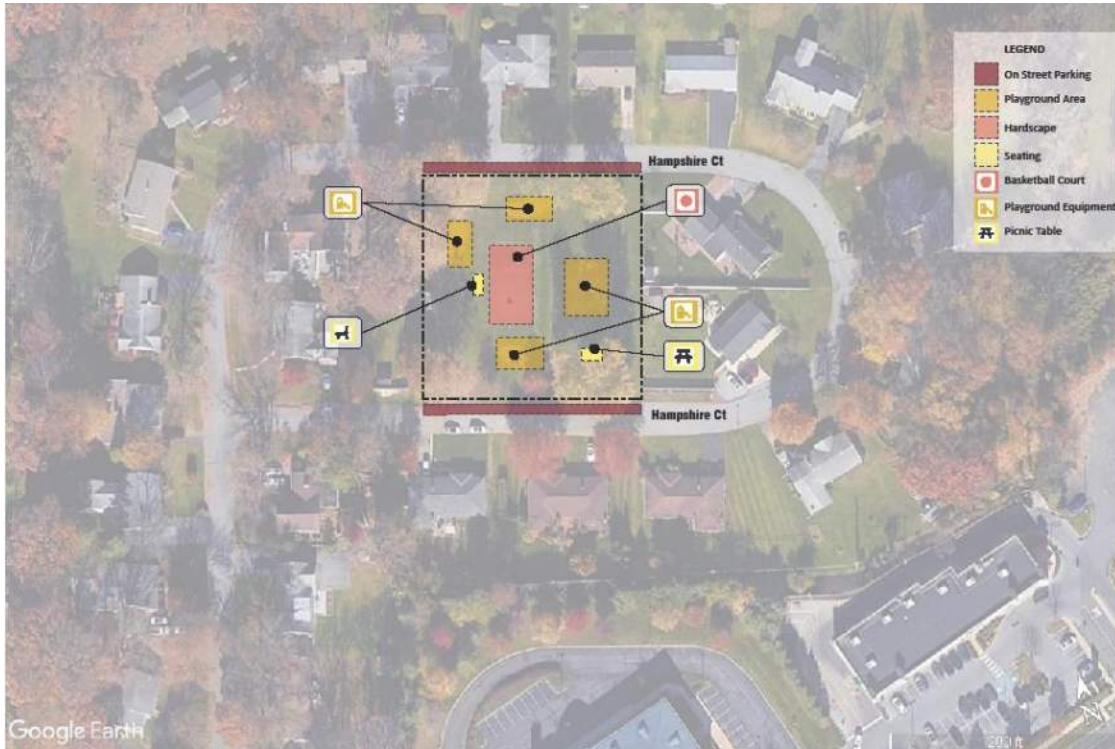
📧 Text **BARRYISETTAS695** to **22333** once to join

What can be improved at Grove Street Park?



No responses received yet. They will appear here...

HAMPSHIRE COURT PARK



Park Location: 4012 Hampshire Court
Allentown, PA 18104

Park Size: 1.0 acres

Items Inventoried: Individual play structures, basketball court, mature shade trees, seating, on-street parking

Observations:

- Shade tree condition
- Needs more paved walkways
- Basketball court needs resurfacing
- Safety surface – mulch
- Dated equipment





< SWT-PROT_PM#2



Visual settings



Edit



🌐 When poll is active, respond at PollEv.com/barryisettas695

📧 Text **BARRYISETTAS695** to **22333** once to join

Have you visited Hampshire Court Park?

Yes

No



< SWT-PROT_PM#2



Visual settings



Edit



🌐 When poll is active, respond at PollEv.com/barryisettas695

📧 Text **BARRYISETTAS695** to **22333** once to join

What do you like about Hampshire Court Park?



No responses received yet. They will appear here...



< SWT-PROT_PM#2



Visual settings



Edit



🌐 When poll is active, respond at PollEv.com/barryisettas695

📧 Text **BARRYISETTAS695** to **22333** once to join

What can be improved at Hampshire Court Park?



No responses received yet. They will appear here...

JACOBY PARK

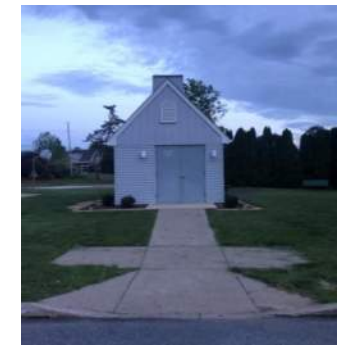
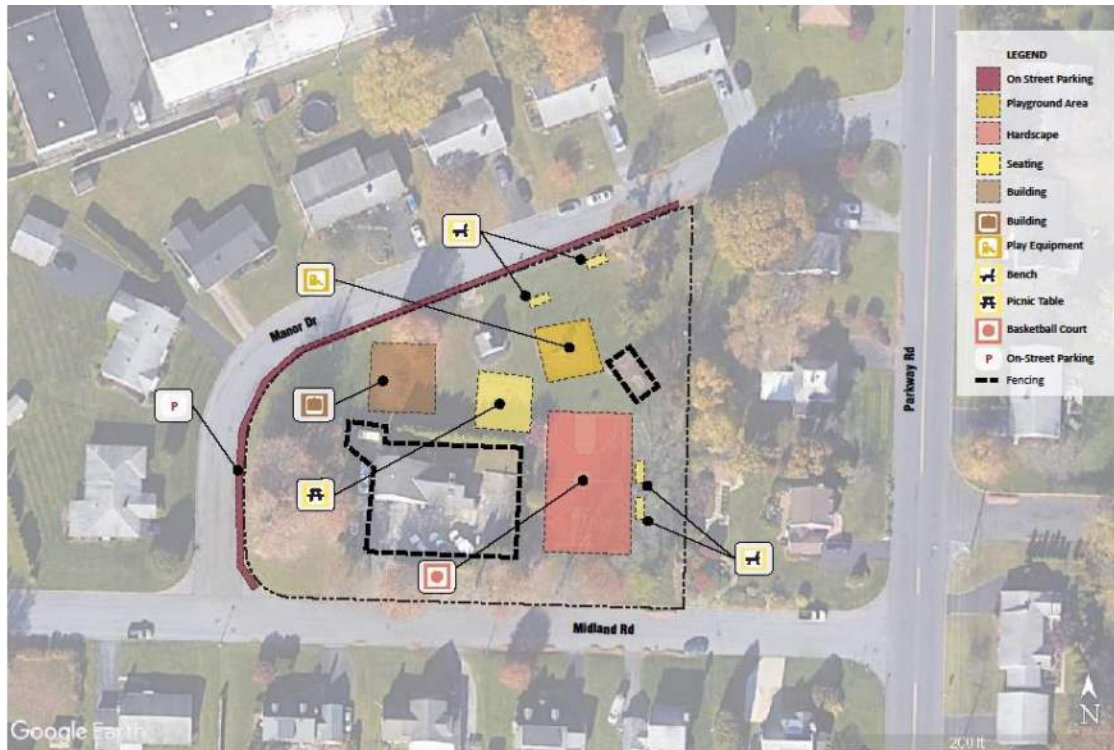
Park Location: 4229 Midland Road
Allentown, PA 18104

Park Size: 1.40 acres

Items Inventoried: playground structure (5-12), basketball court, seating (benches and picnic tables), storage building, on-street parking

Observations:

- New playground equipment
- Basketball court needs resurfacing
- Needs paved walkways





< SWT-PROT_PM#2



Visual settings



Edit



🌐 When poll is active, respond at PollEv.com/barryisettas695

📱 Text **BARRYISETTAS695** to **22333** once to join

Have you visited Jacoby Park?

Yes

No



< SWT-PROT_PM#2



Visual settings



Edit



🌐 When poll is active, respond at PolleEv.com/barryisettas695

📱 Text **BARRYISETTAS695** to **22333** once to join

What do you like about Jacoby Park?



No responses received yet. They will appear here...



< SWT-PROT_PM#2



Visual settings



Edit



🌐 When poll is active, respond at Pollev.com/barryisettas695

📱 Text **BARRYISETTAS695** to **22333** once to join

What can be improved at Jacoby Park?



No responses received yet. They will appear here...

MARTHA NOLAN PARK

Park Location: 3910 Kilmer Street
Allentown, PA 18104

Park Size: 0.60 acres

Items Inventoried: Playground structures, seating, basketball court, off-street parking, seating (benches and picnic tables)

Observations:

- Clear tree litter from playground area
- Needs paved walkways
- Basketball court needs resurfacing
- Safety surface - mulch





< SWT-PROT_PM#2



Visual settings



Edit



When poll is active, respond at PollEv.com/barryisettas695

Text **BARRYISETTAS695** to **22333** once to join



Have you visited Martha Nolan Memorial Park?

Yes

No



< SWT-PROT_PM#2



Visual settings



Edit



🌐 When poll is active, respond at PollEv.com/barryisettas695

📧 Text **BARRYISETTAS695** to **22333** once to join

What do you like about Martha Nolan Memorial Park?



No responses received yet. They will appear here...



< SWT-PROT_PM#2



Visual settings



Edit



🌐 When poll is active, respond at Pollev.com/barryisettas695

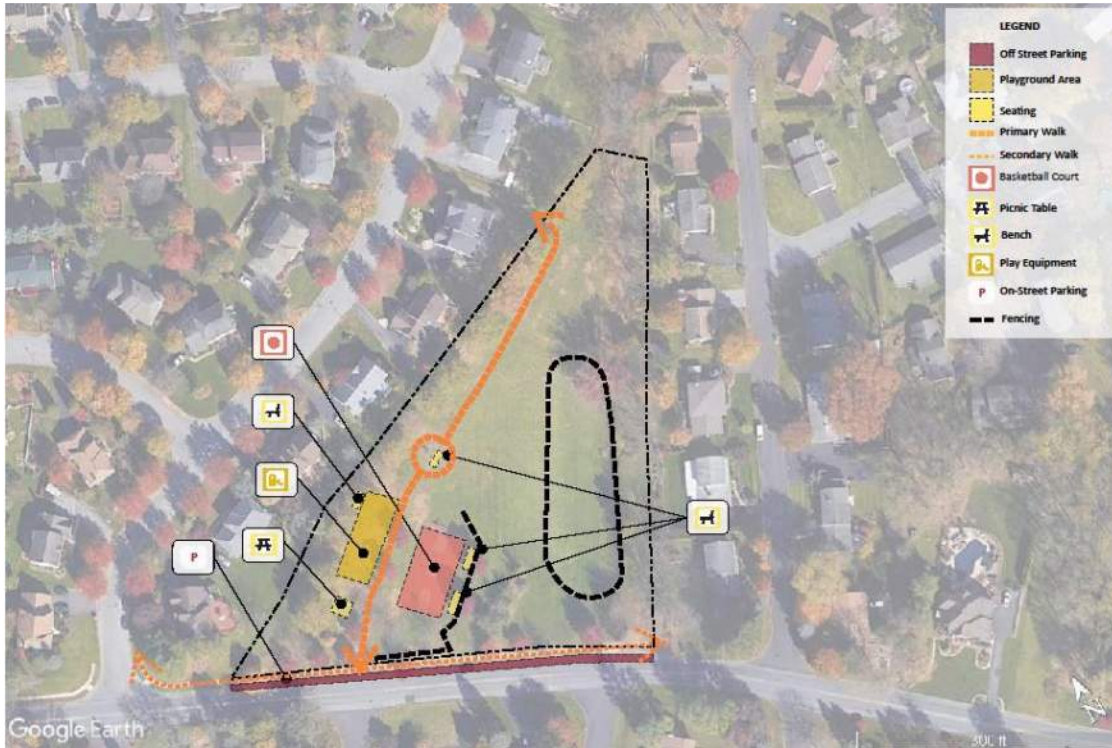
📧 Text **BARRYISETTAS695** to **22333** once to join

What can be improved at Martha Nolan Memorial Park?



No responses received yet. They will appear here...

S. WHITEHALL CHASE PARK



Park Location: 3700 Lincoln Avenue
Allentown, PA 18104

Park Size: 2.40 acres

Items Inventoried: playground equipment (ages 5-12), seating (benches and picnic tables), walking trails, basketball court

Observations:

- Basketball court needs resurfacing
- Safety Surface – Mulch
- Playground surface clean up





< SWT-PROT_PM#2



Visual settings



Edit



When poll is active, respond at PollEv.com/barryisettas695

Text **BARRYISETTAS695** to **22333** once to join

Have you visited South Whitehall Chase Park?

Yes

No



< SWT-PROT_PM#2



Visual settings



Edit



🌐 When poll is active, respond at PollEv.com/barryisettas695

📱 Text **BARRYISETTAS695** to **22333** once to join

What do you like about South Whitehall Chase Park?

🌞 No responses received yet. They will appear here...



< SWT-PROT_PM#2



Visual settings



Edit



🌐 When poll is active, respond at PollEv.com/barryisettas695

📧 Text **BARRYISETTAS695** to **22333** once to join

What can be improved at South Whitehall Chase Park?



No responses received yet. They will appear here...

SPRING VALLEY ESTATES PARK



Park Location: 3636 Nassau Court
Allentown, PA 18104

Park Size: 1.17 acres

Items Inventoried: walkways, gazebo, seating, trash receptacles, bridges, drainage, off-street parking.

Observations:

- Needs defined entry point
- Needs additional programming
- Buffer between park and adjacent residences
- Needs to clear overgrown vegetation





< SWT-PROT_PM#2



Visual settings



Edit



🌐 When poll is active, respond at Pollev.com/barryisettas695

📧 Text **BARRYISETTAS695** to **22333** once to join

Have you visited Spring Valley Estates Park?

Yes

No



< SWT-PROT_PM#2



Visual settings



Edit



🌐 When poll is active, respond at Pollev.com/barryisettas695

📧 Text **BARRYISETTAS695** to **22333** once to join



What do you like about Spring Valley Estates Park?



No responses received yet. They will appear here...



< SWT-PROT_PM#2



Visual settings



Edit



🌐 When poll is active, respond at PolleEv.com/barryisettas695

📱 Text **BARRYISETTAS695** to **22333** once to join

What can be improved at Spring Valley Estates Park?



No responses received yet. They will appear here...

SPRINGHOUSE WEST PARK



Park Location: 4320 Farm Drive
Allentown, PA 18104

Park Size: 1.70 acres

Items Inventoried: Playground equipment (5-12), seating (benches and picnic tables), trash receptacles, off-street parking, storage building

Observations:

- Safety Surface – Mulch
- Needs paved walkways
- Remove any vandalism





< SWT-PROT_PM#2



Visual settings



Edit



🌐 When poll is active, respond at PollEv.com/barryisettas695

📧 Text **BARRYISETTAS695** to **22333** once to join

Have you visited Springhouse West Park?

Yes

No



< SWT-PROT_PM#2



Visual settings



Edit



🌐 When poll is active, respond at PollEv.com/barryisettas695

📧 Text **BARRYISETTAS695** to **22333** once to join

What do you like about Springhouse West Park?



No responses received yet. They will appear here...



< SWT-PROT_PM#2



Visual settings



Edit



🌐 When poll is active, respond at PollEv.com/barryisettas695

📧 Text **BARRYISETTAS695** to **22333** once to join

What can be improved at Springhouse West Park?



No responses received yet. They will appear here...

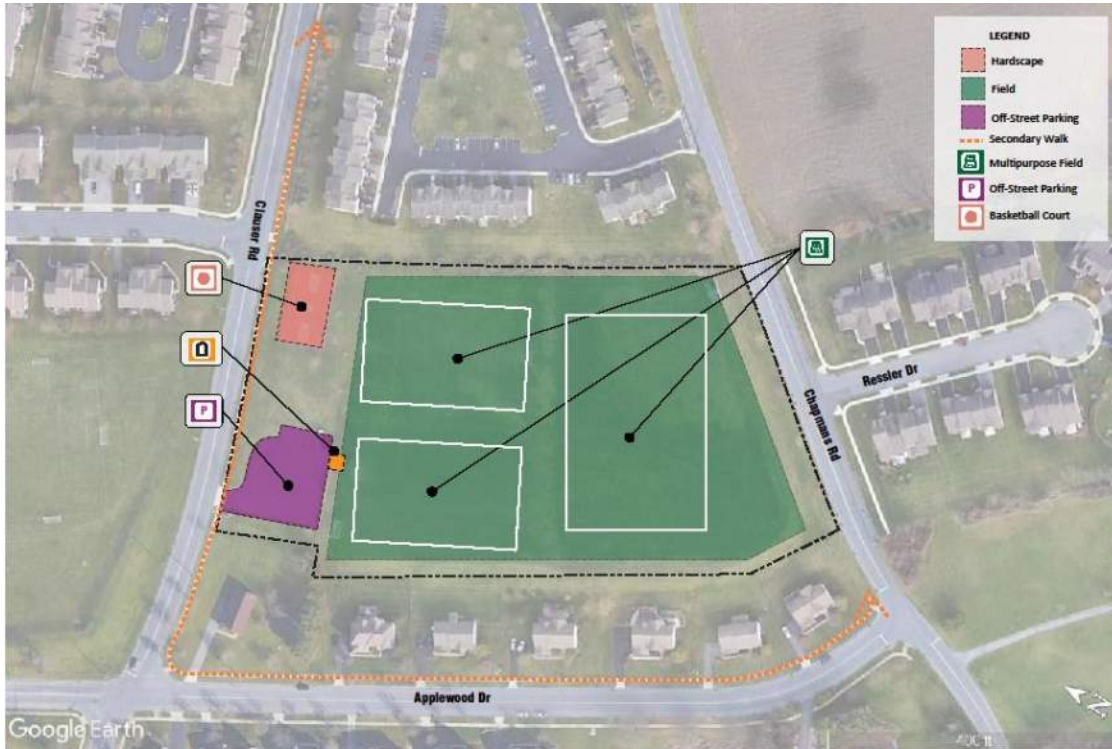
THE VISTAS - PARK

Park Location: 5320 Clauser Road
Orefield, PA 18069

Park Size: 7.6313 acres

Items Inventoried: multipurpose fields, off-street parking, basketball court, restrooms, seating (benches)

- Observations:**
- Needs walkway access to facilities
 - Needs additional seating
 - Buffer between park and adjacent residences





< SWT-PROT_PM#2



Visual settings



Edit



🌐 When poll is active, respond at PollEv.com/barryisettas695

📧 Text **BARRYISETTAS695** to **22333** once to join

Have you visited The Vistas- Park?

Yes

No



< SWT-PROT_PM#2



Visual settings



Edit



🌐 When poll is active, respond at PollEv.com/barryisettas695

📱 Text **BARRYISETTAS695** to **22333** once to join

What do you like about The Vistas- Park?



No responses received yet. They will appear here...



< SWT-PROT_PM#2



Visual settings



Edit



🌐 When poll is active, respond at PollEv.com/barryisettas695

📱 Text **BARRYISETTAS695** to **22333** once to join

What can be improved at The Vistas-Park?



No responses received yet. They will appear here...

THE VISTAS - PLAYGROUND



Park Location: 1872 Emerald Drive
Orefield, PA 18069

Park Size: 0.3965 acres

Items Inventoried: playground equipment (5-12), seating (benches), ADA-access walkways, lighting, on-street parking

Observations:

- Safety surface – mulch
- Well-established lawn





< SWT-PROT_PM#2



Visual settings



Edit



When poll is active, respond at PollEv.com/barryisettas695

Text **BARRYISETTAS695** to **22333** once to join

Have you visited The Vistas- Playground?

Yes

No



< SWT-PROT_PM#2



Visual settings



Edit



🌐 When poll is active, respond at PollEv.com/barryisettas695

📱 Text **BARRYISETTAS695** to **22333** once to join

What do you like about The Vistas- Playground?



No responses received yet. They will appear here...



< SWT-PROT_PM#2



Visual settings



Edit



🌐 When poll is active, respond at PollEv.com/barryisettas695

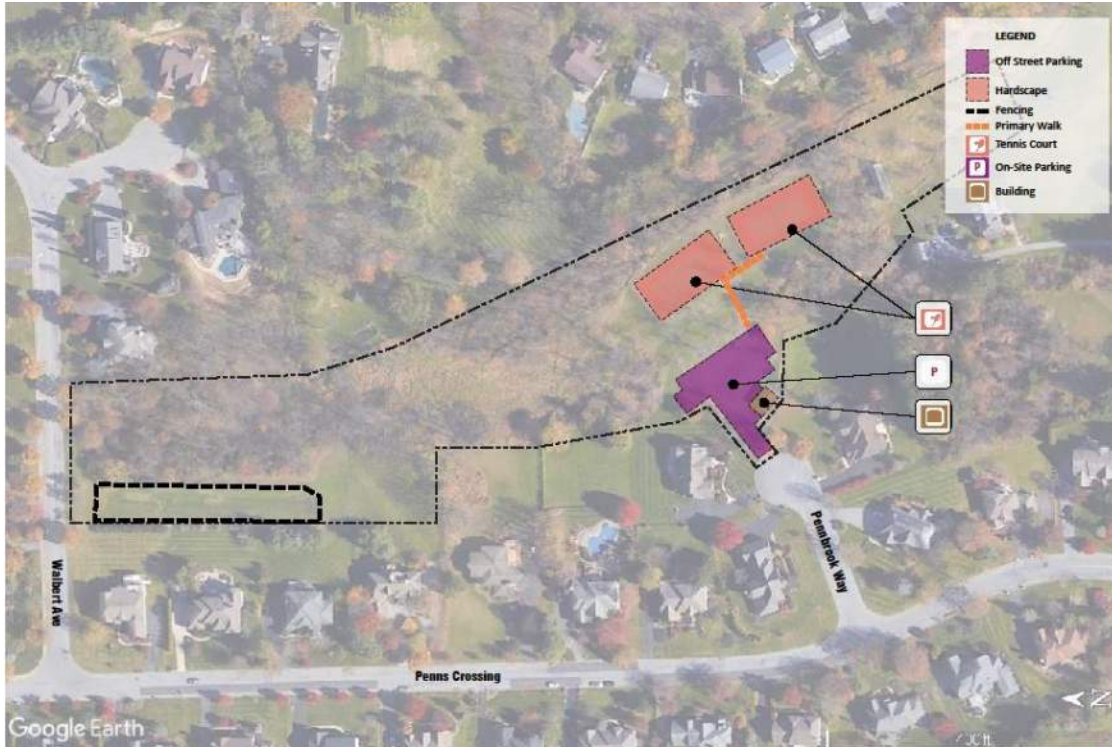
📧 Text **BARRYISETTAS695** to **22333** once to join

What can be improved at The Vistas- Playground?



No responses received yet. They will appear here...

WINCHESTER HEIGHTS PARK



Park Location: 3765 Pennbrook Way
Allentown, PA 18104

Park Size: 5.0 acres

Items Inventoried: off-street parking, storage building

Observations:

- Tennis courts need resurfacing and new netting
- Review entry/exit traffic patterns





< SWT-PROT_PM#2



Visual settings



Edit



When poll is active, respond at PollEv.com/barryisettas695

Text **BARRYISETTAS695** to **22333** once to join

Have you visited Winchester Heights Park?

Yes

No



< SWT-PROT_PM#2



Visual settings



Edit



🌐 When poll is active, respond at PollEv.com/barryisettas695

📧 Text **BARRYISETTAS695** to **22333** once to join

What do you like about Winchester Heights Park?



No responses received yet. They will appear here...



< SWT-PROT_PM#2



Visual settings



Edit



🌐 When poll is active, respond at PollEv.com/barryisettas695

📧 Text **BARRYISETTAS695** to **22333** once to join

What can be improved at Winchester Heights Park?



No responses received yet. They will appear here...

Township Parks

POCKET PARK

- Bungalow Park
- Cedar Creek Farms
- Devon Circle Park
- Fernwood Park
- Grandlawn Park
- Grove Street Park
- Hampshire Court Park
- Jacoby Park
- Martha Nolan Memorial Park
- South Whitehall Chase Park
- Spring Valley Estates
- Springhouse West Park
- The Vistas Park
- The Vistas Playground
- Winchester Heights Park

TOTAL ACRES: 41+

COMMUNITY PARKS

- Covered Bridge Park

TRAILS

- Jordan Greenway

TOTAL ACRES: 165 +

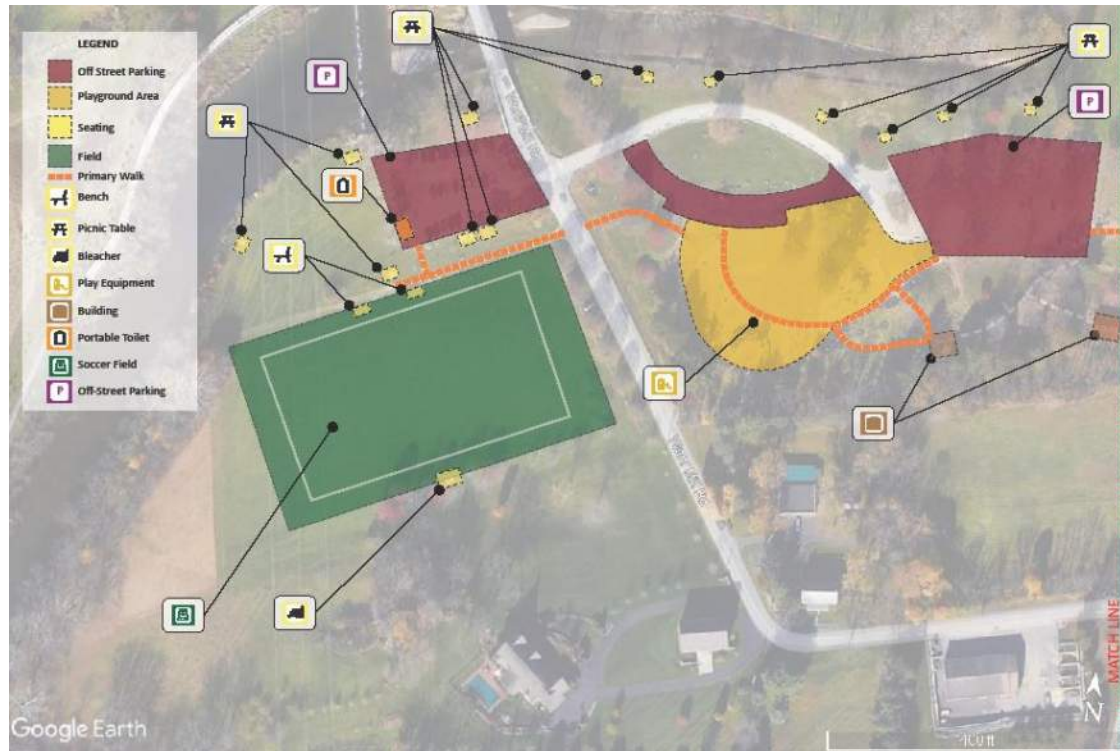
OPEN SPACE

- Beverly
- Cedar Crest Gardens
- Davis-Smith
- Deerfield
- Golden Oaks
- Kohler Ridge Park
- Parkland Drive
- Stoneridge Terrace
- Twin Grove
- Wedgewood

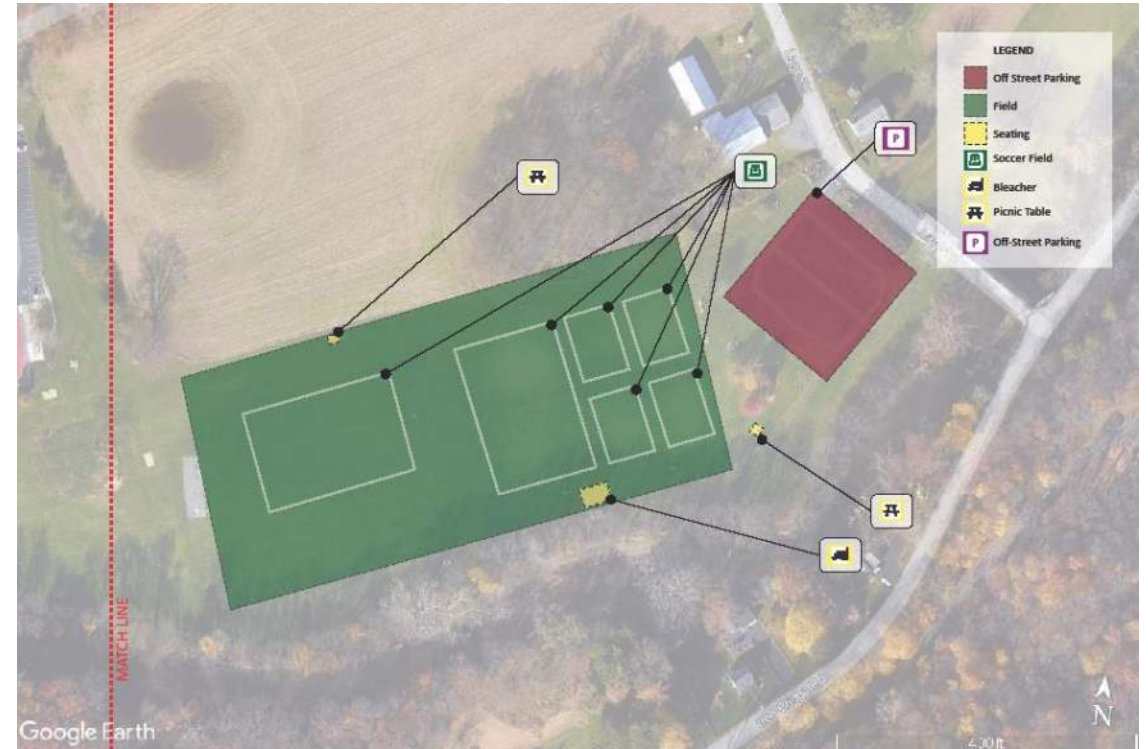
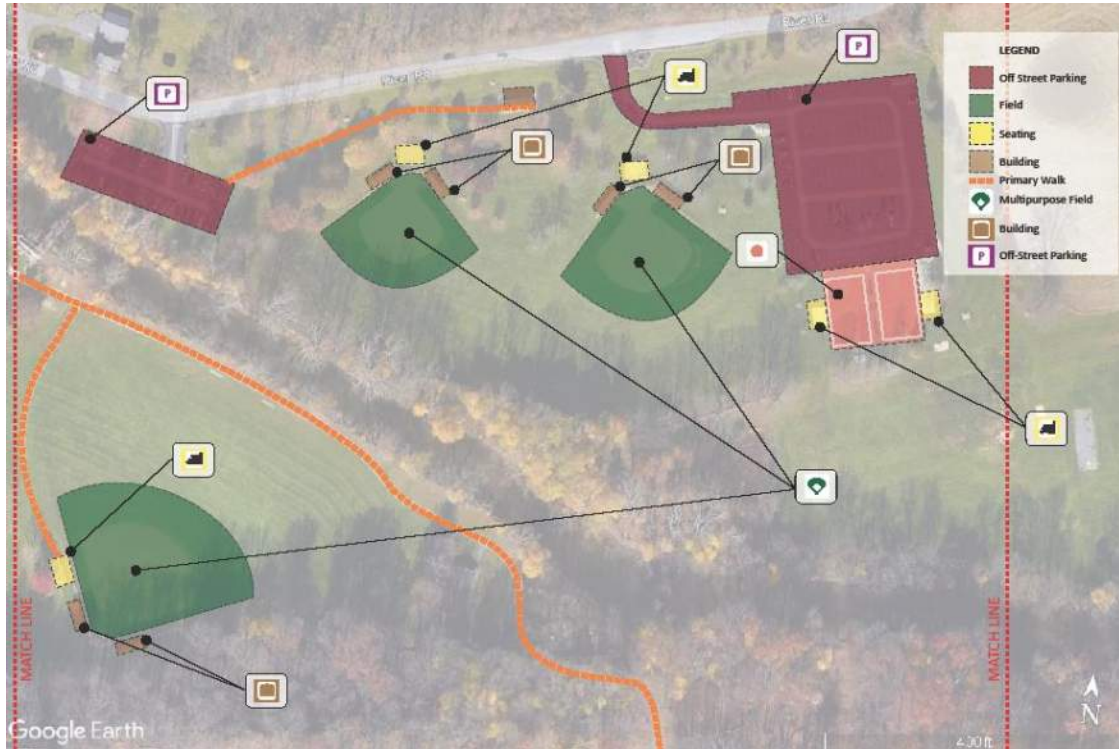
TOTAL ACRES: 45 +

26 Township Parks

COVERED BRIDGE PARK



COVERED BRIDGE PARK



COVERED BRIDGE PARK

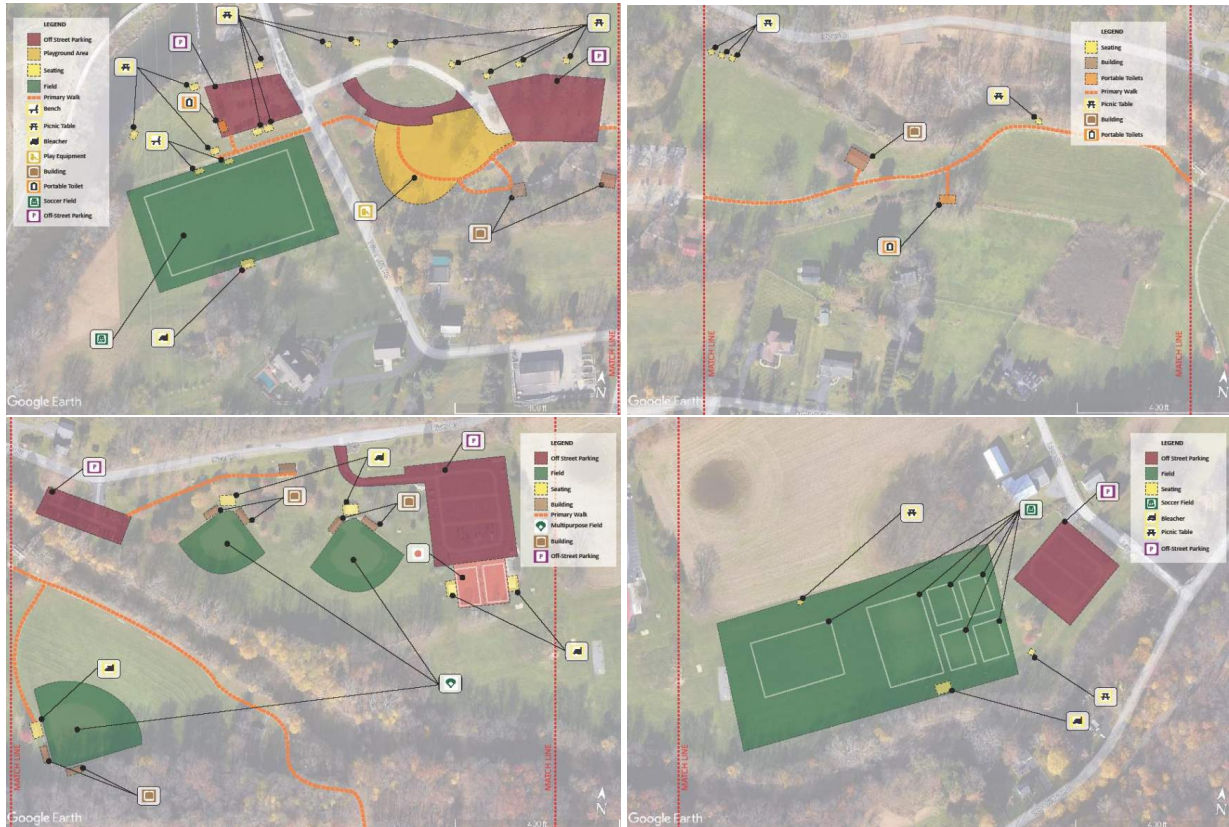
Park Location: 2466 Wehr Mill Road
Allentown, PA 18104

Park Size: 165.11 acres

Items Inventoried: Off-street parking, walking trails, pavilions, restrooms, multipurpose fields, playground equipment (2-5, 5-12), seating (benches, bleachers, picnic tables), baseball/softball fields, basketball courts

Observations:

- Need additional paved access to facilities
- Safety Surface – Mulch
- Fencing and netting at fields/courts





< SWT-PROT_PM#2



Visual settings



Edit



🌐 When poll is active, respond at PollEv.com/barryisettas695

📧 Text **BARRYISETTAS695** to **22333** once to join

Have you visited Covered Bridge Park?

Yes

No



< SWT-PROT_PM#2



Visual settings



Edit



🌐 When poll is active, respond at PollEv.com/barryisettas695

📱 Text **BARRYISETTAS695** to **22333** once to join

What do you like about Covered Bridge Park?



No responses received yet. They will appear here...



< SWT-PROT_PM#2



Visual settings



Edit



🌐 When poll is active, respond at PollEv.com/barryisettas695

📧 Text **BARRYISETTAS695** to **22333** once to join

What can be improved at Covered Bridge Park?



No responses received yet. They will appear here...

JORDAN CREEK GREENWAY

Park Location: 2466 Wehr Mill Road
Allentown, PA 18104
(SWT Entrance)

Trail Size: 14 Miles

Items Inventoried: Asphalt walking paths and boardwalks, seating, trash receptacles

Observations:

- Needs additional seating
- Needs off-street parking on trail entry point side





< SWT-PROT_PM#2



Visual settings



Edit



🌐 When poll is active, respond at Pollev.com/barryisettas695

📧 Text **BARRYISETTAS695** to **22333** once to join



Have you visited Jordan Creek Greenway?

Yes

No



< SWT-PROT_PM#2



Visual settings



Edit



🌐 When poll is active, respond at PolleEv.com/barryisettas695

📱 Text **BARRYISETTAS695** to **22333** once to join

What do you like about Jordan Creek Greenway?



No responses received yet. They will appear here...



< SWT-PROT_PM#2



Visual settings



Edit



🌐 When poll is active, respond at PolleEv.com/barryisettas695

📄 Text **BARRYISETTAS695** to **22333** once to join

What can be improved at Jordan Creek Greenway?



No responses received yet. They will appear here...

Township Parks

POCKET PARK

Bungalow Park
Cedar Creek Farms
Devon Circle Park
Fernwood Park
Grandlawn Park
Grove Street Park
Hampshire Court Park
Jacoby Park
Martha Nolan Memorial Park
South Whitehall Chase Park
Spring Valley Estates
Springhouse West Park
The Vistas Park
The Vistas Playground
Winchester Heights Park

TOTAL ACRES: 41+

COMMUNITY PARKS

Covered Bridge Park

TRAILS

Jordan Greenway

TOTAL ACRES: 165 +

OPEN SPACE

Beverly
Cedar Crest Gardens
Davis-Smith
Deerfield
Golden Oaks
Kohler Ridge Park
Parkland Drive
Stoneridge Terrace
Twin Grove
Wedgewood

TOTAL ACRES: 45 +

26 Township Parks

BEVERLY OPEN SPACE



Park Location: 632 Beverly Drive
Allentown, PA 18104

Park Size: 0.50 acres

Items Inventoried: Open space, lawn, vegetation

Observations:

- Needs defined entry point



CEDAR CREST GARDENS

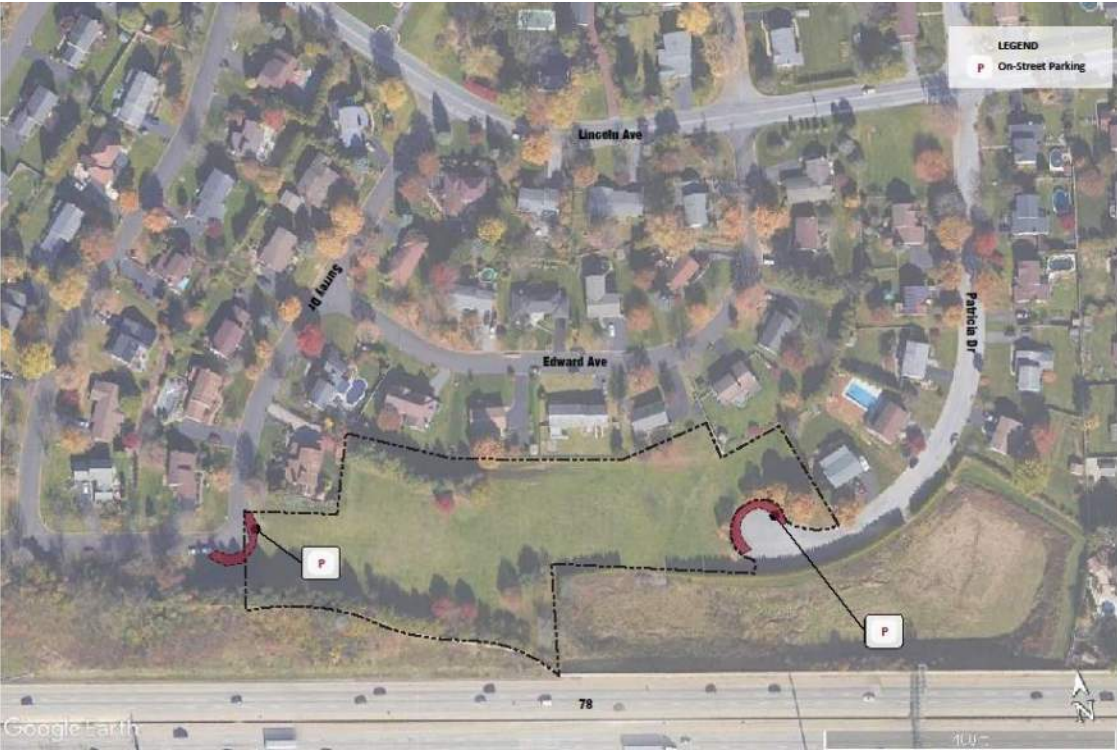
OPEN SPACE

Park Location: 1160 Patricia Drive
Allentown, PA 18104

Park Size: 2.77 acres

Items Inventoried: Open space, lawn, vegetation

- Observations:**
- Needs defined park signage
 - Sloped topography
 - Adjacent to Route 78



DEERFIELD OPEN SPACE



Park Location: 1365 Doe Trail Road
Allentown, PA 18104

Park Size: 4.30 acres

Items Inventoried: Open space, lawn,
vegetation

Observations:
- Needs defined entry point



GOLDEN OAKS OPEN SPACE



Park Location: 1948 Latta Street
Allentown, PA 18104

Park Size: 2.0 acres

Items Inventoried: Open space, lawn, vegetation

Observations:
- Needs defined entry point



KOHLER RIDGE PARK



Park Location: Huckleberry Ridge

Park Size: 25.7 acres

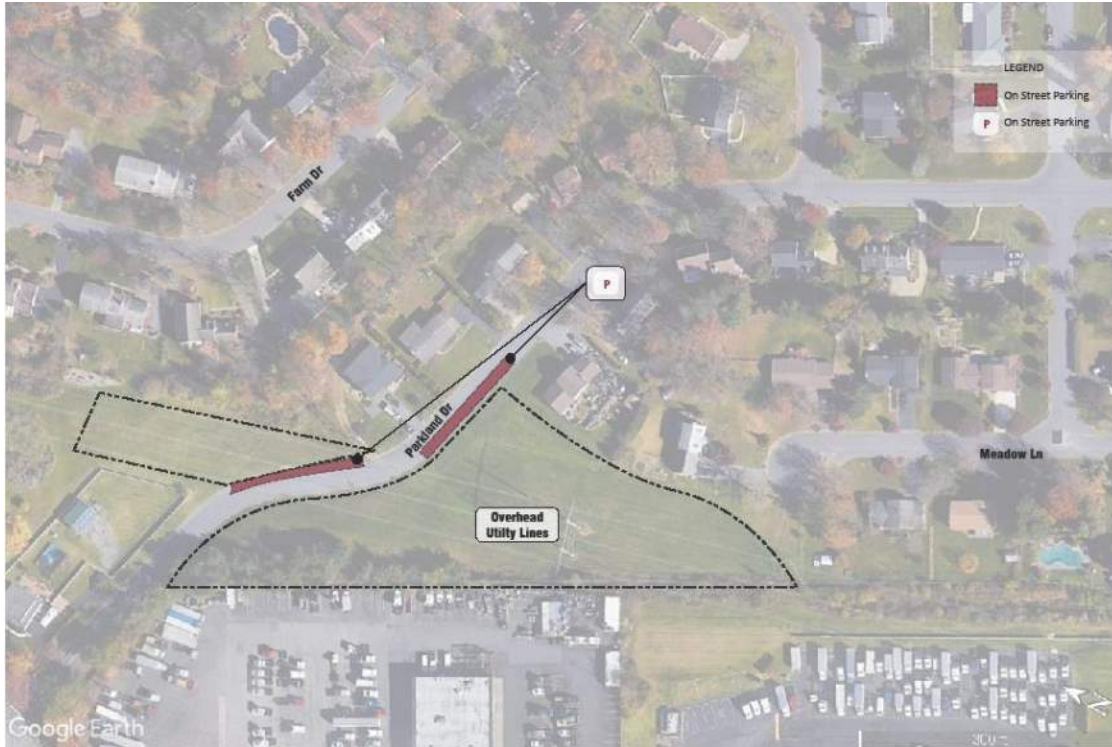
Items Inventoried: Open space, lawn, vegetation

Observations:

- Currently natural area
- Master Plan project being finalized



PARKLAND DRIVE OPEN SPACE



Park Location: 4480 Parkland Drive
Allentown, PA 18104

Park Size: 4.20 acres

Items Inventoried: Open space, lawn,
vegetation

Observations:

- Needs defined entry point
- Needs safe crossing across road



STONERIDGE TERRACE OPEN SPACE



Park Location: 1160 Dylan Drive
Allentown, PA 18104

Park Size: 1.40 acres

Items Inventoried: Open space, lawn,
vegetation

Observations:

- Adjacent to Route 22 (road noise)
- Needs defined entry point



TWIN GROVE OPEN SPACE



Park Location: 1347 N. 21st. Street
Allentown, PA 18104

Park Size: 2.0 acres

Items Inventoried: Open space, lawn,
vegetation

Observations:

- Adjacent to Route 22 (road noise)
- Needs defined entry point



WEDGEWOOD OPEN SPACE



Park Location: 4010 Evergreen Road
Allentown, PA 18104

Park Size: 3.0 acres

Items Inventoried: Open space, lawn,
vegetation

Observations:

- Adjacent to Route 22 (road noise)
- Needs defined entry point





< SWT-PROT_PM#2



Visual settings



Edit



🌐 When poll is active, respond at PollEv.com/barryisettas695

📧 Text **BARRYISETTAS695** to **22333** once to join

Have you visited a SWT Open Space?

Yes

No



< SWT-PROT_PM#2



Visual settings



Edit



When poll is active, respond at PollEv.com/barryisettas695

Text **BARRYISETTAS695** to **22333** once to join

Which open space do you most often visit?

- Beverly
- Cedar Creek Farms
- Deerfield
- Golden Oaks
- Kohler Ridge Park
- Parkland Drive
- Stoneridge Terrace
- Twin Grove
- Wedgewood

I do not visit SWT open spaces.



< SWT-PROT_PM#2



Visual settings



Edit



🌐 When poll is active, respond at PollEv.com/barryisettas695

📱 Text **BARRYISETTAS695** to **22333** once to join

What do you like about SWT Open Spaces?



No responses received yet. They will appear here...



< SWT-PROT_PM#2



Visual settings



Edit



🌐 When poll is active, respond at PollEv.com/barryisettas695

📱 Text **BARRYISETTAS695** to **22333** once to join

What can be improved at SWT Open Spaces?



No responses received yet. They will appear here...

Park Metrics & SWT

- Park Metrics are a type of benchmarking that provides an idea what municipalities of similar size have in terms of park facilities.
- Municipalities can differ greatly depending upon the interests of the community and the market.

How Does SWT Compare: Parkland?

Typical agency with a population of 20,000 residents:

- ❖ 1 park per 1,233 residents
- ❖ 21 parks @ 248 acres
- ❖ 12.9 acres per 1,000 residents (incl. open space)

South Whitehall Township:

- ❖ 1 park per 1,170 residents
- ❖ 17 parks @ 206 acres (incl. Jordan Creek Greenway Trail)
- ❖ 13 acres per 1,000 residents (incl. open space)

How Does SWT Compare: Park Facilities?

Typical agency with population of 20,000 residents:

- ❖ Playgrounds (5-12 y.o.): 1 per 1,986 residents
- ❖ Basketball Courts: 1 per 3,750 residents
- ❖ Softball Fields: 1 per 5,667 residents
- ❖ Soccer Fields: 1 per 9,622 residents
- ❖ Tennis Courts: 1 per 2,748 residents
- ❖ Pickleball: 1 per 3,446 residents
- ❖ Dog Parks: 1 per 3,446 residents

How Does SWT Compare: Park Facilities?

South Whitehall Township:

- ❖ Playgrounds (5-12 y.o.): 1 per 1,809 residents
- ❖ Basketball Courts: 1 per 2,211 residents
- ❖ Softball Fields: 1 per 3,981 residents
- ❖ Soccer Fields: 1 per 2,843 residents
- ❖ Tennis Courts: 1 per 9,952 residents
- ❖ Pickleball: 0
- ❖ Dog Parks: 0

Programs

SWT has a diverse and impressive schedule of programs and events that have grown significantly over just the past few years.

- Fitness
- Arts & Crafts
- Sports
- Outdoor & Environmental
- Special Events
- Movies
- Concerts

Programs Gaps?

- Many of the programs offered are aimed at multiple age groups: children, teens, adults and seniors.
- Could there be an opportunity for programs more targeted to certain age groups?
 - After-School?
 - Pre-Schoolers?
 - Teens?
 - Seniors?
 - Disabled?
 - STEM Programs?

How to Fill the Gaps?

- What is the process to identify possible new programs?
- What are the challenges?
- What is a Program Plan?
 - Identifies:
 - Existing programs in the community- SWT's and competition
 - Potential:
 - New programs
 - Price points
 - Partners

Summary: What is working?

- Overall, the parks were relatively clean and well kept.
- The Township is actively working to replace items at numerous parks.
- The Township is on par with most NRPA measured facilities.



What is missing? What can be improved?

- Many parks need paved access to their facilities.
- Safety surface - mulching
- Safe parking needs to be available at the parks
- Additional Feedback?

Public Survey – Current Standings

289 Surveys completed (6/23 @ 4pm)

253 online respondents

36 paper copy respondents

Age groups represented:

All age groups, but top 3:

1. 19-39

2. 0-12

3. 40-55

Popular parks visited:

1. Covered Bridge Park

2. Cedar Creek Park

3. Jordan Greenway

How can “x” park be improved?

Examples:

- Wiffle ball field
- Pickleball
- Native planting, meadows

382% increase in the past week

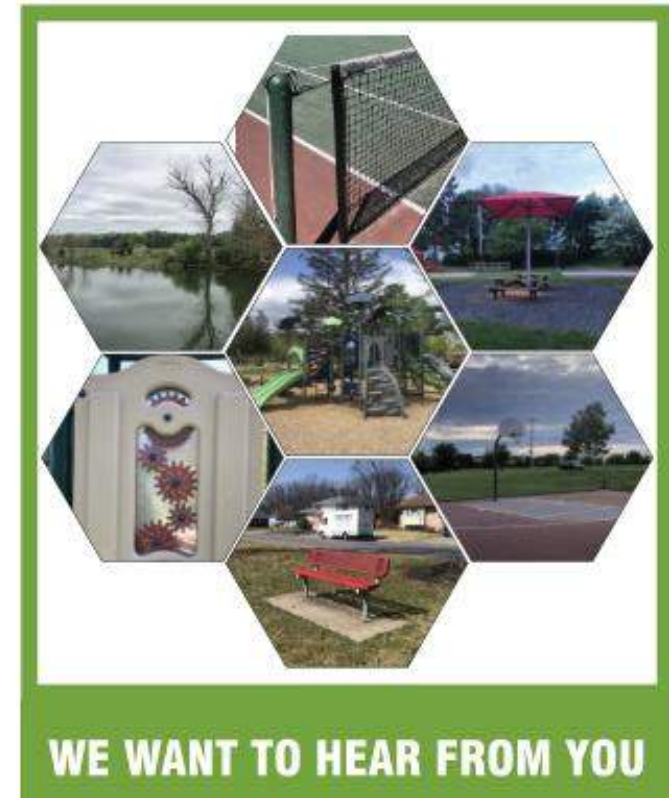
60 surveys on 6/15

289 as of 6/23 (4pm)

Be involved!

Take our public survey

<https://www.surveymonkey.com/r/SWTPROT>



Homework...

Complete the survey (paper or online)

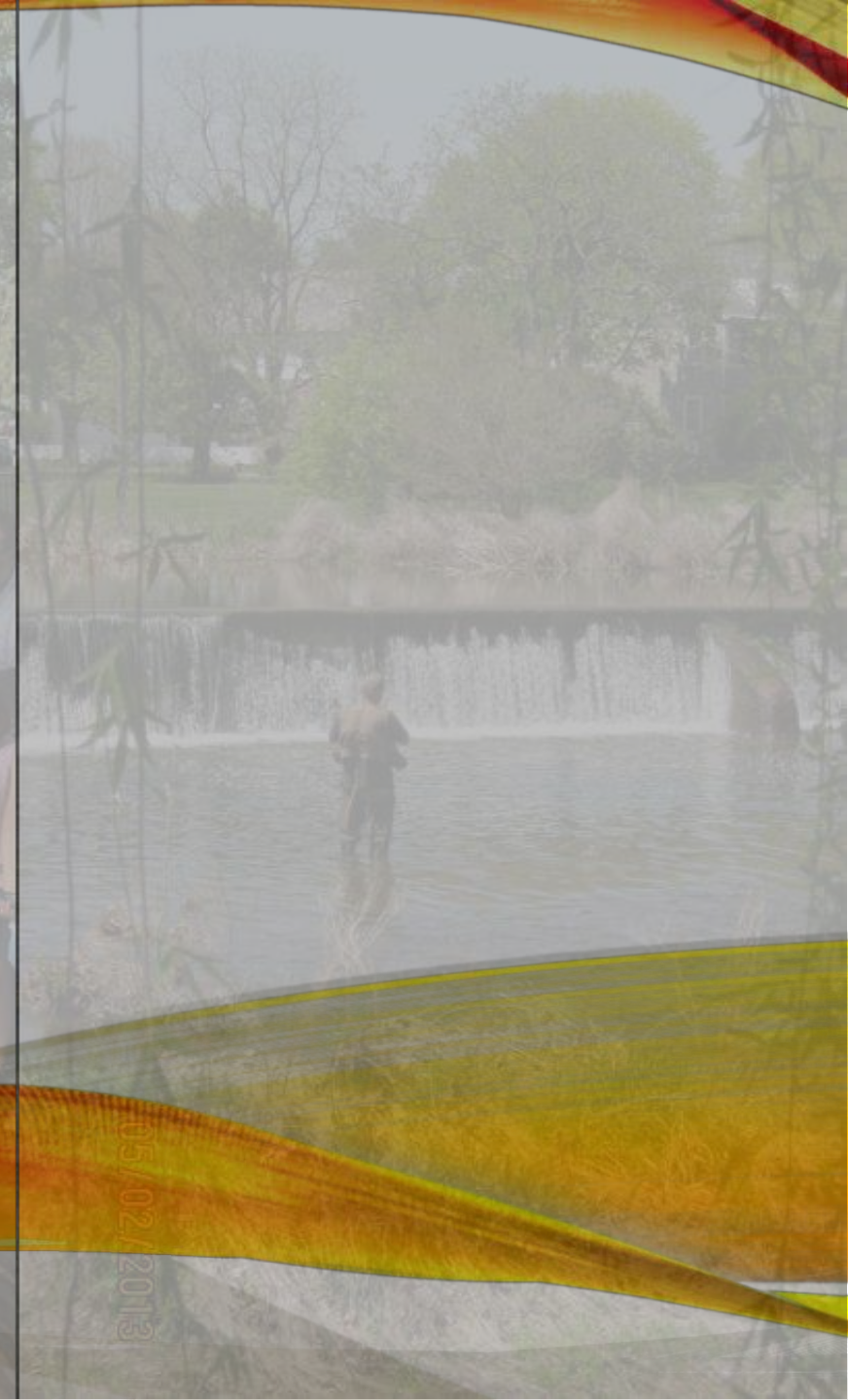
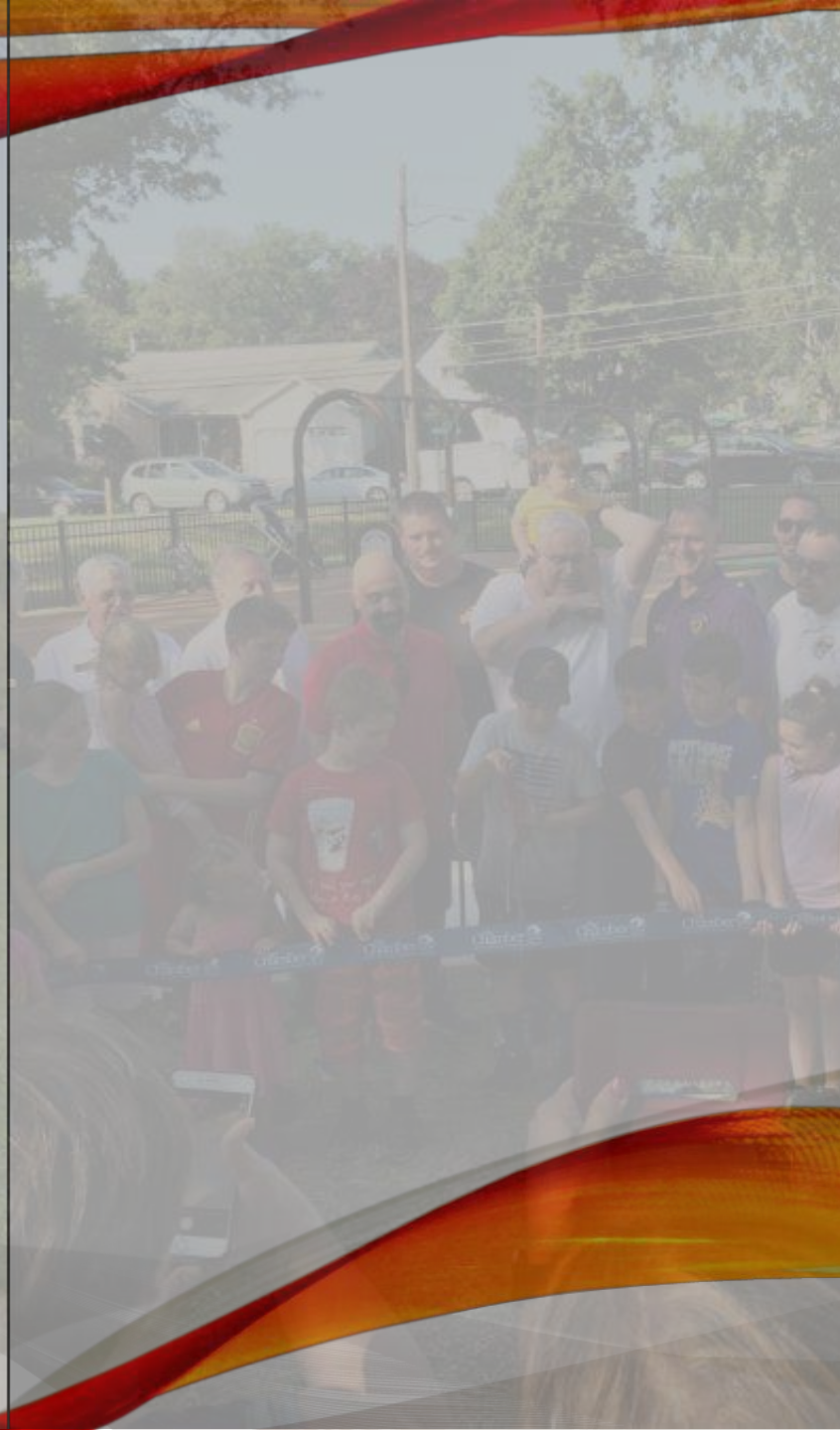
Save the date...Next Public Meeting

Date: TBD

7:00pm

4444 Walbert Ave

Q & A



05/02/2013

05/02/2013

CONTACT INFORMATION

Thank you...

Updates and Contact information:

South Whitehall Township Website: www.southwhitehall.com

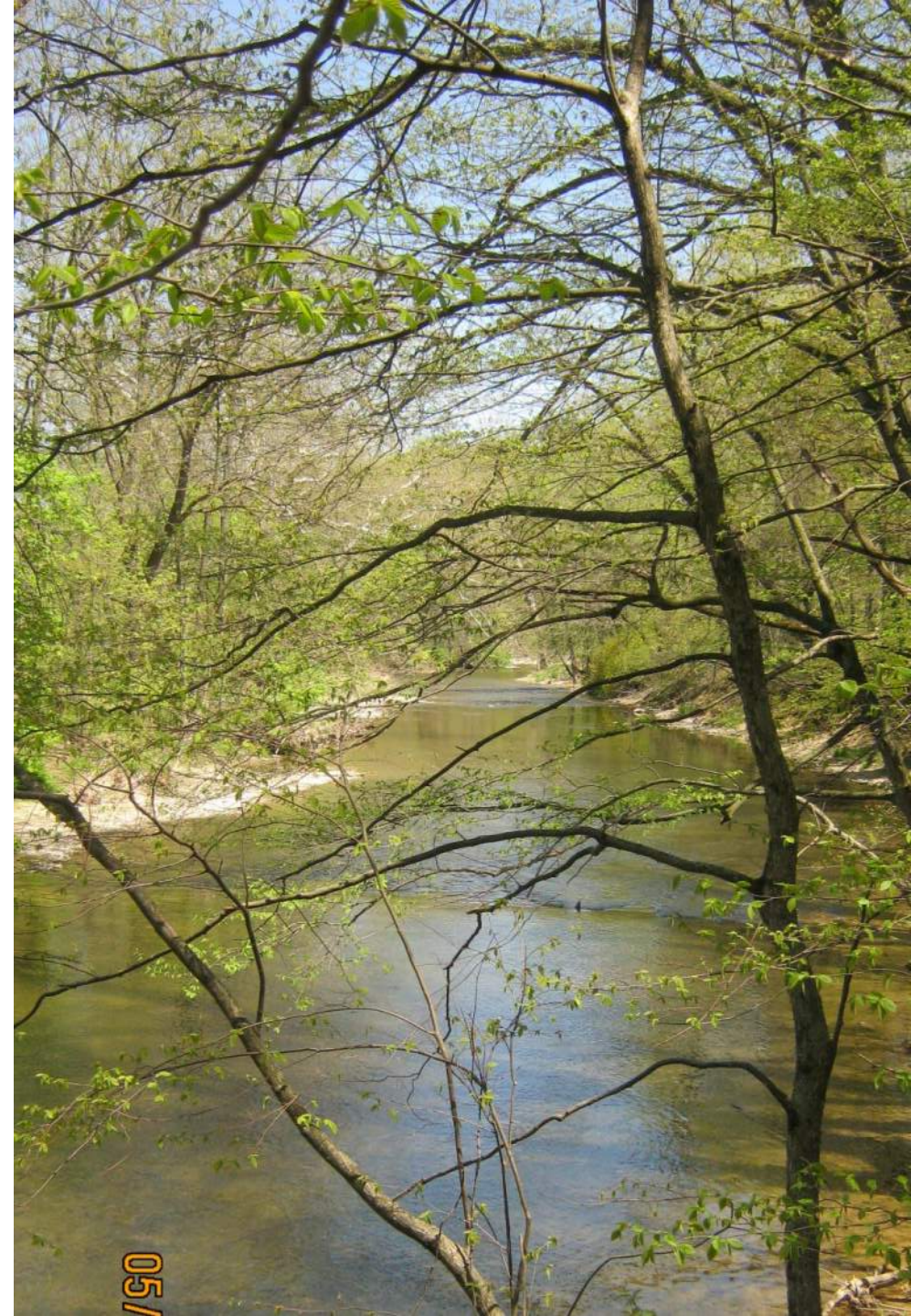
Park and Recreation Director:

Mike Kukitz, kukitzm@southwhitehall.com 610-398-0401

Consultant Team:

Bryan Smith, bsmith@barryisett.com 610-398-0904

Ashley Eichlin, aeichlin@barryisett.com



PUBLIC MEETING #2

SOUTH WHITEHALL TOWNSHIP PARK, RECREATION, OPEN SPACE, AND TRAIL PLAN



BUNGALOW PARK

When poll is active, respond at pollev.com/barryisettas695

Text **BARRYISETTAS695** to **22333** once to join

Have you visited Bungalow Park?



When poll is active, respond at pollev.com/barryisettas695

Text **BARRYISETTAS695** to **22333** once to join

What do you like about Bungalow Park?

oriented
family younger

When poll is active, respond at pollev.com/barryisettas695

Text **BARRYISETTAS695** to **22333** once to join

What can be improved at Bungalow Park?

adults/
seniors alley
driveway delineated
maybe tgere

PUBLIC MEETING #2

SOUTH WHITEHALL TOWNSHIP PARK, RECREATION, OPEN SPACE, AND TRAIL PLAN

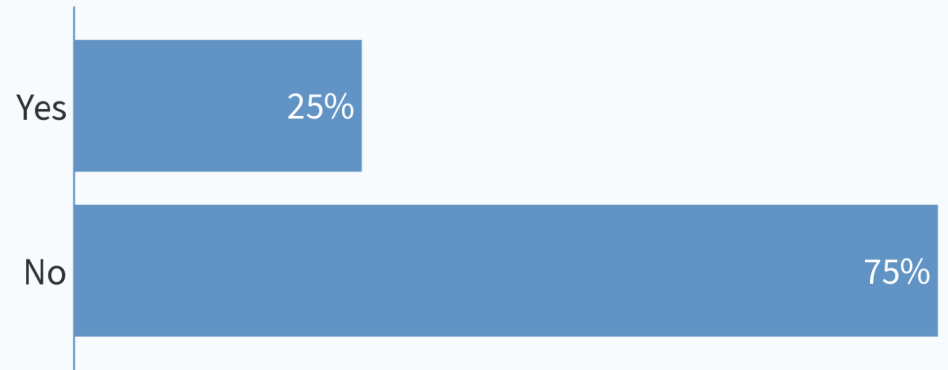


CEDAR CREEK FARMS PARK

When poll is active, respond at pollev.com/barryisettas695

Text **BARRYISETTAS695** to **22333** once to join

Have you visited Cedar Creek Farms Park?



When poll is active, respond at pollev.com/barryisettas695

Text **BARRYISETTAS695** to **22333** once to join

What do you like about Cedar Creek Farms Park?



When poll is active, respond at pollev.com/barryisettas695

Text **BARRYISETTAS695** to **22333** once to join

What can be improved at Cedar Creek Farms Park?



PUBLIC MEETING #2

SOUTH WHITEHALL TOWNSHIP PARK, RECREATION, OPEN SPACE, AND TRAIL PLAN

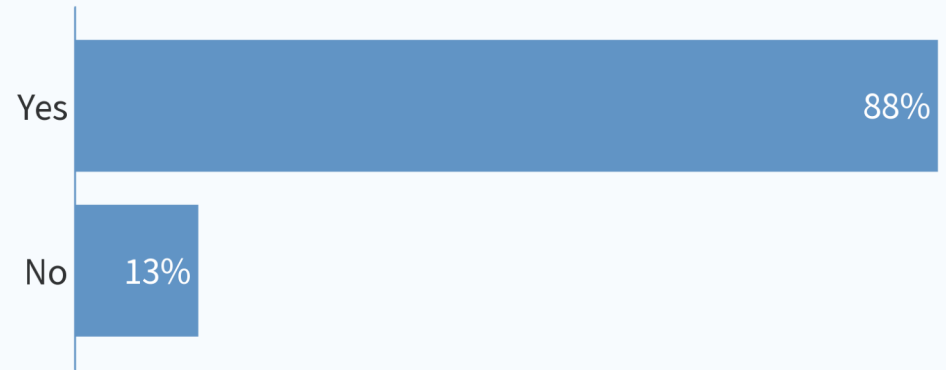


COVERED BRIDGE PARK

When poll is active, respond at pollev.com/barryisettas695

Text **BARRYISETTAS695** to **22333** once to join

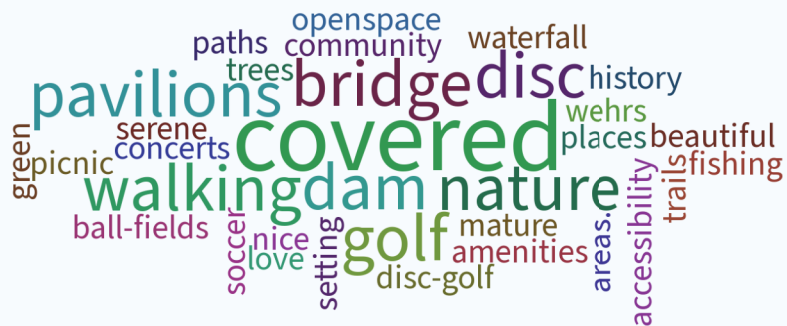
Have you visited Covered Bridge Park?



When poll is active, respond at pollev.com/barryisettas695

Text **BARRYISETTAS695** to **22333** once to join

What do you like about Covered Bridge Park?



When poll is active, respond at pollev.com/barryisettas695

Text **BARRYISETTAS695** to **22333** once to join

What can be improved at Covered Bridge Park?



PUBLIC MEETING #2

SOUTH WHITEHALL TOWNSHIP PARK, RECREATION, OPEN SPACE, AND TRAIL PLAN

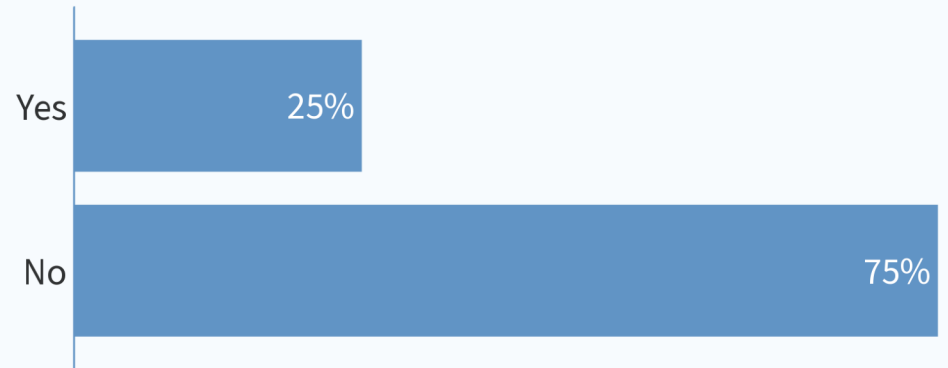


DEVON CIRCLE PARK

When poll is active, respond at pollev.com/barryisettas695

Text **BARRYISETTAS695** to **22333** once to join

Have you visited Devon Circle Park?



When poll is active, respond at pollev.com/barryisettas695

Text **BARRYISETTAS695** to **22333** once to join

What do you like about Devon Circle Park?

neighborhood
community friends
playground
seating

When poll is active, respond at pollev.com/barryisettas695

Text **BARRYISETTAS695** to **22333** once to join

What can be improved at Devon Circle Park?

street-landscaping
know seating
street-buffer

PUBLIC MEETING #2

SOUTH WHITEHALL TOWNSHIP PARK, RECREATION, OPEN SPACE, AND TRAIL PLAN

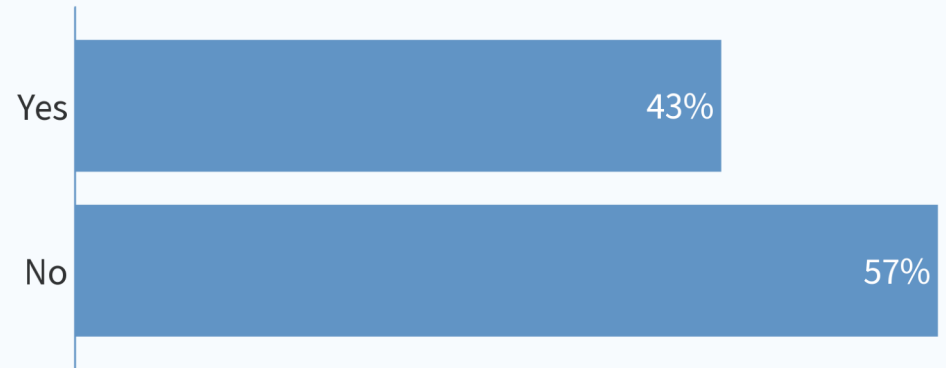


FERNWOOD PARK

When poll is active, respond at pollev.com/barryisettas695

Text **BARRYISETTAS695** to **22333** once to join

Have you visited Fernwood Park?



When poll is active, respond at pollev.com/barryisettas695

Text **BARRYISETTAS695** to **22333** once to join

What do you like about Fernwood Park?



When poll is active, respond at pollev.com/barryisettas695

Text **BARRYISETTAS695** to **22333** once to join

What can be improved at Fernwood Park?



PUBLIC MEETING #2

SOUTH WHITEHALL TOWNSHIP PARK, RECREATION, OPEN SPACE, AND TRAIL PLAN

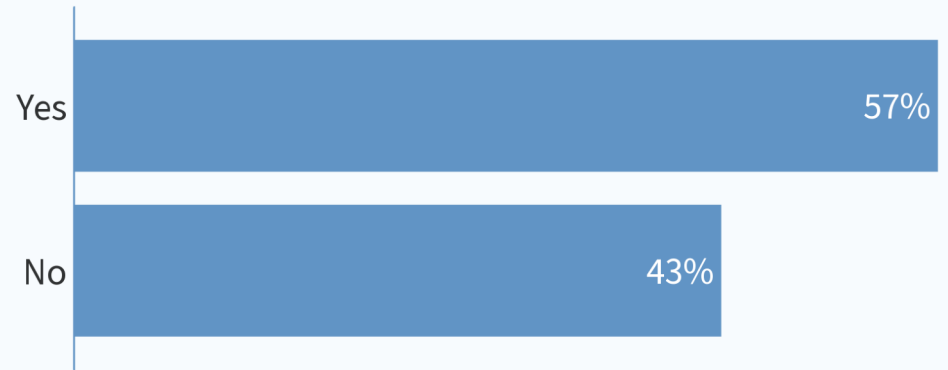


GRANDLAWN PARK

When poll is active, respond at pollev.com/barryisettas695

Text **BARRYISETTAS695** to **22333** once to join

Have you visited Grandlawn Park?



When poll is active, respond at pollev.com/barryisettas695

Text **BARRYISETTAS695** to **22333** once to join

What do you like about Grandlawn Park?



When poll is active, respond at pollev.com/barryisettas695

Text **BARRYISETTAS695** to **22333** once to join

What can be improved at Grandlawn Park?



PUBLIC MEETING #2

SOUTH WHITEHALL TOWNSHIP PARK, RECREATION, OPEN SPACE, AND TRAIL PLAN



GROVE STREET PARK

When poll is active, respond at pollev.com/barrysettas695

Text **BARRYSETTAS695** to **22333** once to join

Have you visited Grove Street Park?



When poll is active, respond at pollev.com/barrysettas695

Text **BARRYSETTAS695** to **22333** once to join

What do you like about Grove Street Park?

fun playground shaded
surrounding great
neighborhood name
accessibility
location

When poll is active, respond at pollev.com/barrysettas695

Text **BARRYSETTAS695** to **22333** once to join

What can be improved at Grove Street Park?

seating

PUBLIC MEETING #2

SOUTH WHITEHALL TOWNSHIP PARK, RECREATION, OPEN SPACE, AND TRAIL PLAN

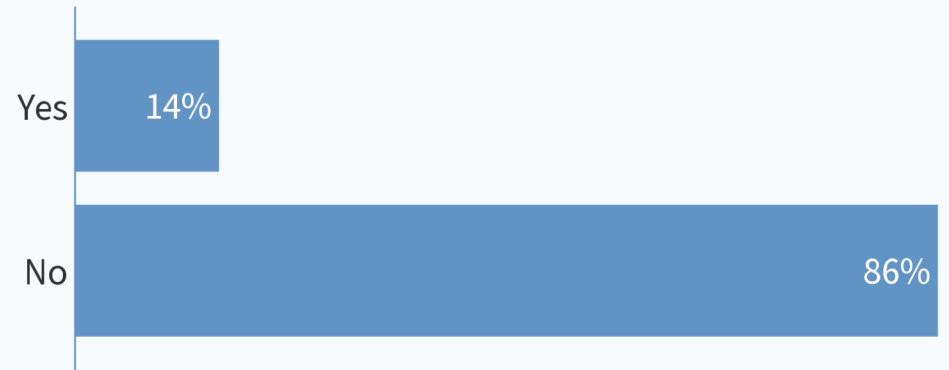


HAMPSHIRE COURT PARK

When poll is active, respond at pollev.com/barryisettas695

Text **BARRYISETTAS695** to **22333** once to join

Have you visited Hampshire Court Park?



When poll is active, respond at pollev.com/barryisettas695

Text **BARRYISETTAS695** to **22333** once to join

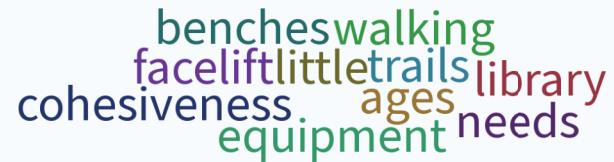
What do you like about Hampshire Court Park?



When poll is active, respond at pollev.com/barryisettas695

Text **BARRYISETTAS695** to **22333** once to join

What can be improved at Hampshire Court Park?



PUBLIC MEETING #2

SOUTH WHITEHALL TOWNSHIP PARK, RECREATION, OPEN SPACE, AND TRAIL PLAN

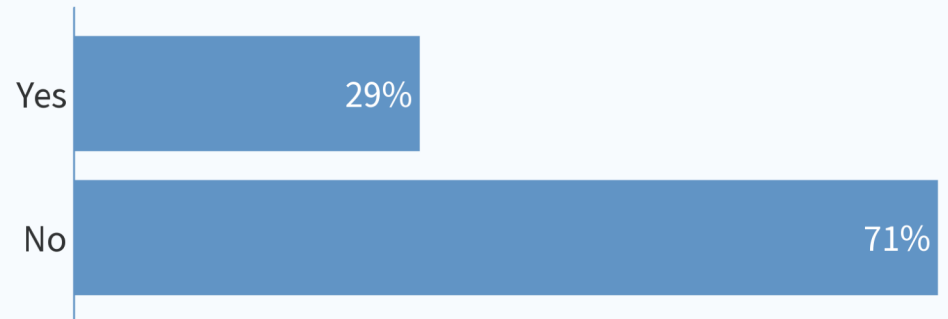


JACOBY PARK

When poll is active, respond at pollev.com/barryisettas695

Text **BARRYISETTAS695** to **22333** once to join

Have you visited Jacoby Park?



When poll is active, respond at pollev.com/barryisettas695

Text **BARRYISETTAS695** to **22333** once to join

What do you like about Jacoby Park?

neighborhood
quaint
walkable
clean shade density
amenities

When poll is active, respond at pollev.com/barryisettas695

Text **BARRYISETTAS695** to **22333** once to join

What can be improved at Jacoby Park?

No responses received yet. They will appear here...

PUBLIC MEETING #2

SOUTH WHITEHALL TOWNSHIP PARK, RECREATION, OPEN SPACE, AND TRAIL PLAN

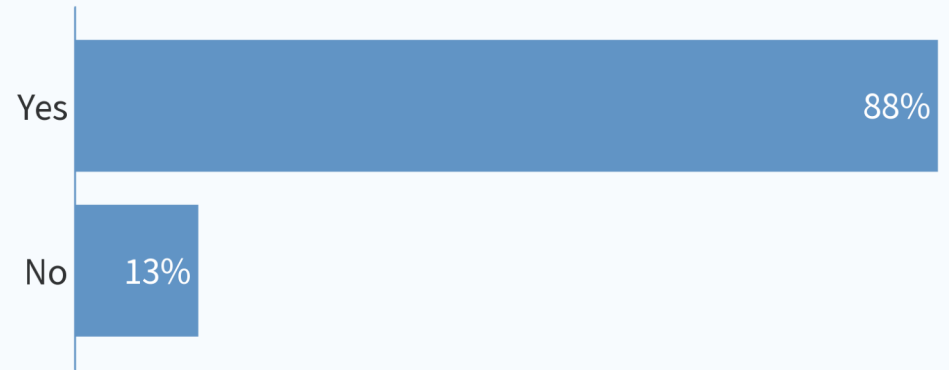


JORDAN CREEK GREENWAY

When poll is active, respond at pollev.com/barryisettas695

Text **BARRYISETTAS695** to **22333** once to join

Have you visited Jordan Creek Greenway?



When poll is active, respond at pollev.com/barryisettas695

Text **BARRYISETTAS695** to **22333** once to join

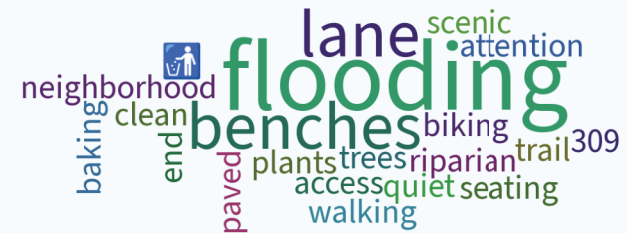
What do you like about Jordan Creek Greenway?



When poll is active, respond at pollev.com/barryisettas695

Text **BARRYISETTAS695** to **22333** once to join

What can be improved at Jordan Creek Greenway?



PUBLIC MEETING #2

SOUTH WHITEHALL TOWNSHIP PARK, RECREATION, OPEN SPACE, AND TRAIL PLAN

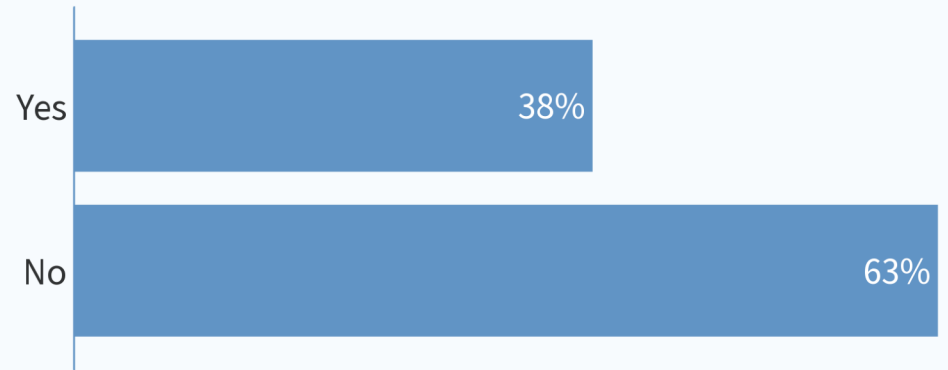


MARTHA NOLAN MEMORIAL PARK

When poll is active, respond at pollev.com/barryisettas695

Text **BARRYISETTAS695** to **22333** once to join

Have you visited Martha Nolan Memorial Park?



When poll is active, respond at pollev.com/barryisettas695

Text **BARRYISETTAS695** to **22333** once to join

What do you like about Martha Nolan Memorial Park?

close gathering
creek calm seating
place

When poll is active, respond at pollev.com/barryisettas695

Text **BARRYISETTAS695** to **22333** once to join

What can be improved at Martha Nolan Memorial Park?

seating never
monkey picked balls
paths fall trees
picnic-table walking

PUBLIC MEETING #2

SOUTH WHITEHALL TOWNSHIP PARK, RECREATION, OPEN SPACE, AND TRAIL PLAN

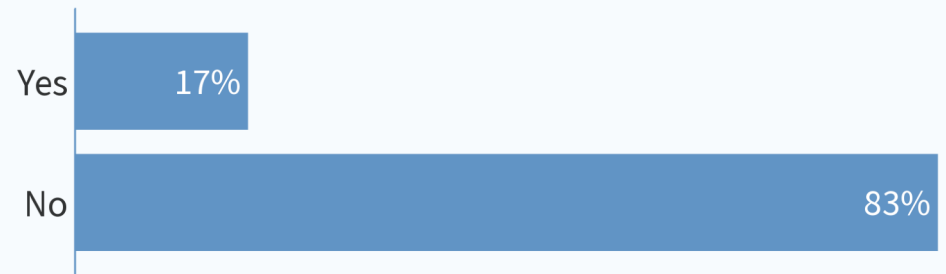


S. WHITEHALL CHASE PARK

When poll is active, respond at pollev.com/barryisettas695

Text **BARRYISETTAS695** to **22333** once to join

Have you visited South Whitehall Chase Park?



When poll is active, respond at pollev.com/barryisettas695

Text **BARRYISETTAS695** to **22333** once to join

What do you like about South Whitehall Chase Park?

greenspace
grassy location
hamilton south
walkable accessible
neighborhoods
neighborhood

When poll is active, respond at pollev.com/barryisettas695

Text **BARRYISETTAS695** to **22333** once to join

What can be improved at South Whitehall Chase Park?

basin-landscaping
seating

PUBLIC MEETING #2

SOUTH WHITEHALL TOWNSHIP PARK, RECREATION, OPEN SPACE, AND TRAIL PLAN

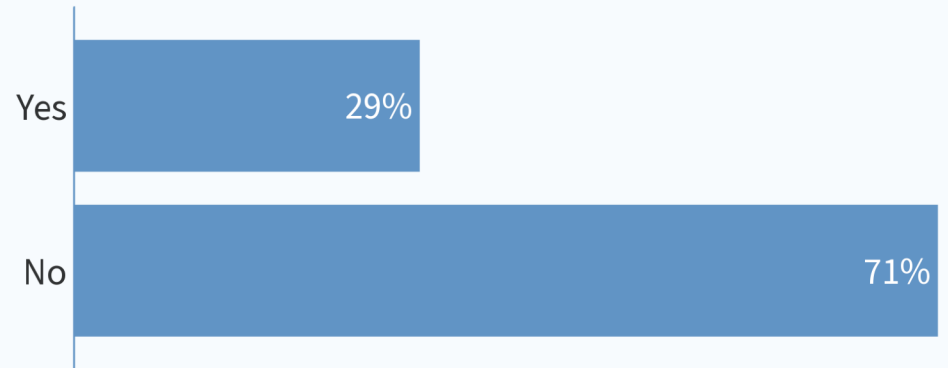


SPRINGHOUSE WEST PARK

When poll is active, respond at pollev.com/barryisettas695

Text **BARRYISETTAS695** to **22333** once to join

Have you visited Springhouse West Park?



When poll is active, respond at pollev.com/barryisettas695

Text **BARRYISETTAS695** to **22333** once to join

What do you like about Springhouse West Park?

open food clean
gather greentrucks
neighbors space community

When poll is active, respond at pollev.com/barryisettas695

Text **BARRYISETTAS695** to **22333** once to join

What can be improved at Springhouse West Park?

picnic-table path seating benches
shaded perimeter walking around

Seating is revealed as a popular public response throughout multiple parks

PUBLIC MEETING #2

SOUTH WHITEHALL TOWNSHIP PARK, RECREATION, OPEN SPACE, AND TRAIL PLAN

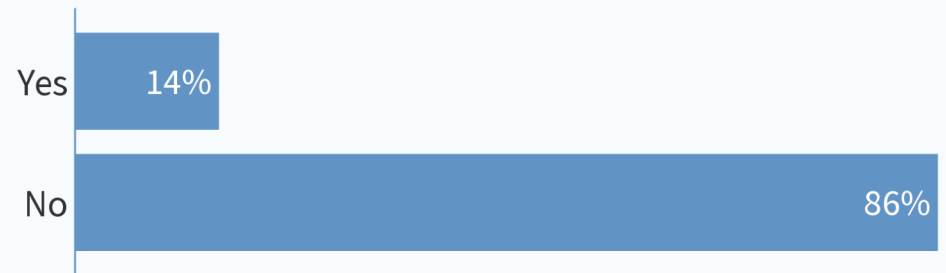


SPRING VALLEY ESTATES PARK

When poll is active, respond at pollev.com/barryisettas695

Text **BARRYISETTAS695** to **22333** once to join

Have you visited Spring Valley Estates Park?



When poll is active, respond at pollev.com/barryisettas695

Text **BARRYISETTAS695** to **22333** once to join

What do you like about Spring Valley Estates Park?

passive
park nature
calm serene

When poll is active, respond at pollev.com/barryisettas695

Text **BARRYISETTAS695** to **22333** once to join

What can be improved at Spring Valley Estates Park?

passive
visibility
recreation.
manicured

PUBLIC MEETING #2

SOUTH WHITEHALL TOWNSHIP PARK, RECREATION, OPEN SPACE, AND TRAIL PLAN

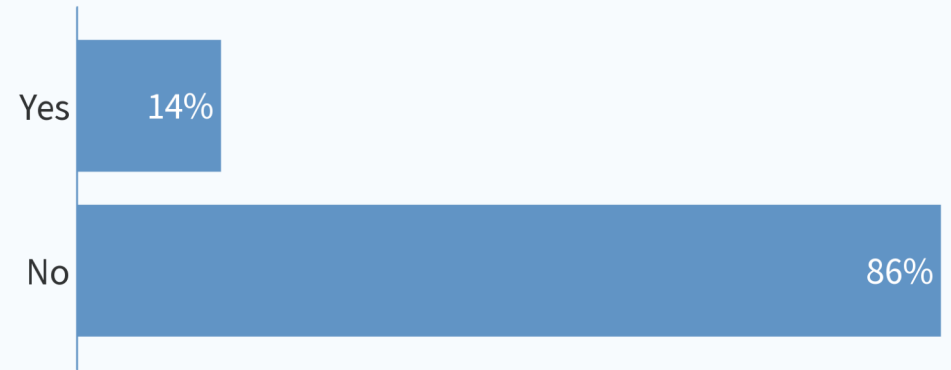


THE VISTAS - PARK

When poll is active, respond at pollev.com/barryisettas695

Text **BARRYISETTAS695** to **22333** once to join

Have you visited The Vistas- Park?



When poll is active, respond at pollev.com/barryisettas695

Text **BARRYISETTAS695** to **22333** once to join

What do you like about The Vistas- Park?



When poll is active, respond at pollev.com/barryisettas695

Text **BARRYISETTAS695** to **22333** once to join

What can be improved at The Vistas-Park?



Parking improvements are revealed as a popular public response throughout multiple parks

PUBLIC MEETING #2

SOUTH WHITEHALL TOWNSHIP PARK, RECREATION, OPEN SPACE, AND TRAIL PLAN

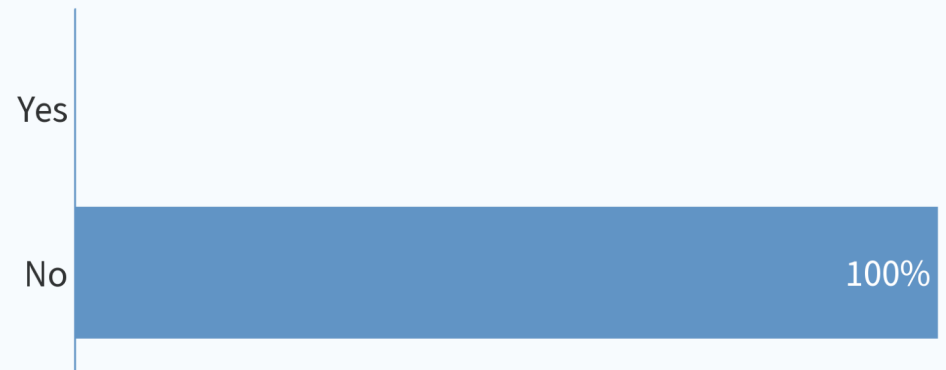


THE VISTAS - PLAYGROUND

When poll is active, respond at pollev.com/barryisettas695

Text **BARRYISETTAS695** to **22333** once to join

Have you visited The Vistas- Playground?



When poll is active, respond at pollev.com/barryisettas695

Text **BARRYISETTAS695** to **22333** once to join

What do you like about The Vistas- Playground?

No responses received yet. They will appear here...

When poll is active, respond at pollev.com/barryisettas695

Text **BARRYISETTAS695** to **22333** once to join

What can be improved at The Vistas- Playground?

No responses received yet. They will appear here...

PUBLIC MEETING #2

SOUTH WHITEHALL TOWNSHIP PARK, RECREATION, OPEN SPACE, AND TRAIL PLAN

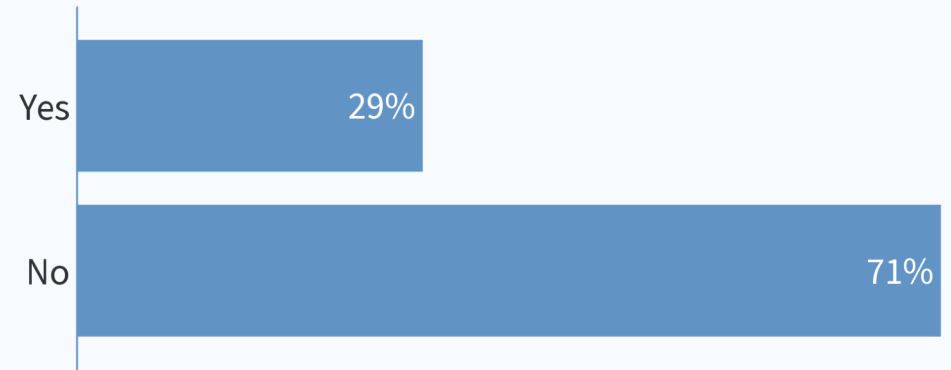


WINCHESTER HEIGHTS PARK

When poll is active, respond at pollev.com/barryisettas695

Text **BARRYISETTAS695** to **22333** once to join

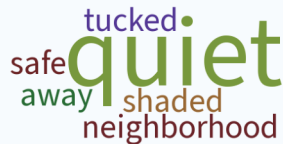
Have you visited Winchester Heights Park?



When poll is active, respond at pollev.com/barryisettas695

Text **BARRYISETTAS695** to **22333** once to join

What do you like about Winchester Heights Park?



When poll is active, respond at pollev.com/barryisettas695

Text **BARRYISETTAS695** to **22333** once to join

What can be improved at Winchester Heights Park?



Pickleball is revealed as a popular public response in PM #1 and PM#2

PUBLIC MEETING #2

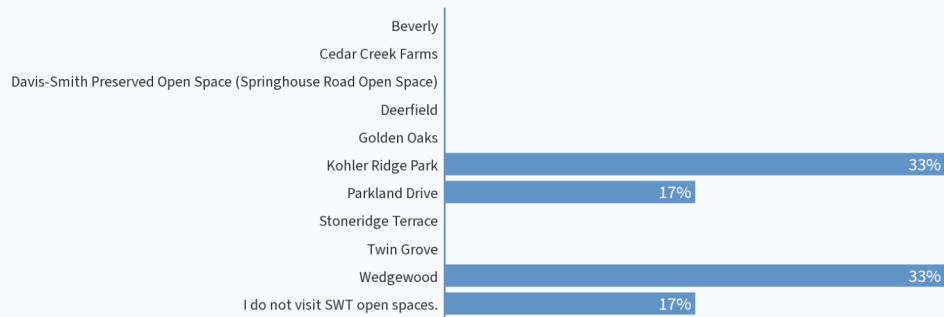
OPEN SPACE

SOUTH WHITEHALL TOWNSHIP PARK, RECREATION, OPEN SPACE, AND TRAIL PLAN



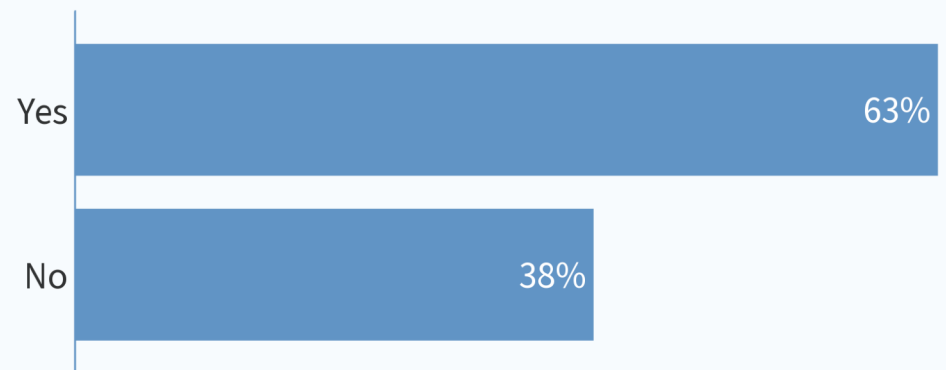
When poll is active, respond at pollev.com/barryisettas695
Text **BARRYISETTAS695** to **22333** once to join

Which open space do you most often visit?



When poll is active, respond at pollev.com/barryisettas695
Text **BARRYISETTAS695** to **22333** once to join

Have you visited a SWT Open Space?



When poll is active, respond at pollev.com/barryisettas695
Text **BARRYISETTAS695** to **22333** once to join

What do you like about SWT Open Spaces?



When poll is active, respond at pollev.com/barryisettas695
Text **BARRYISETTAS695** to **22333** once to join

What can be improved at SWT Open Spaces?



Residents from Wedgewood Open Space: Interest in keeping open space as is; open lawn



MULTI-DISCIPLINE ENGINEERS AND CONSULTANTS

85 South Route 100, Allentown, PA 18106
610.398.0904 610.481.9098
barryisett.com

Date: 06/23/2022
Project #: 1091421.000
Service Task:

SWT PARK RECREATION OPEN SPACE AND TRAIL PLAN PUBLIC MEETING # 2 SIGN IN
June 23, 2022 @ 7:00 pm

Table with 3 columns: NAME, POSITION/ROLE, EMAIL ADDRESS. Contains handwritten entries for Karen Faust, Tony Faust, Kaleb Grover, Gene L. Shanabeger, Jane Mann, and Robert Swahl.

Sign In

PUBLIC MEETING III

OCTOBER 4, 2022

SOUTH WHITEHALL TOWNSHIP, LEHIGH COUNTY, PA

PARK, RECREATION, OPEN SPACE AND TRAIL PLAN UPDATE (PROT)



Introductions



Bryan Smith
Chief Landscape Architect

Stephanie Milewski
Project Manager



Lindsay Taylor
Certified Park and Recreation Planner



Ashley Eichlin
Project Technician



COMMITTEE

Herb Bender

Director of Operations, Public Works Manager

Mike Kukitz

Manager Parks and Recreation

Diane Kelly

Board of Commissioners, President

Monica Hodges

Board of Commissioners, Assistant Secretary

David Manhardt

Director of Community Development

Mark Ackerman

Park and Recreation Board Member



Agenda



- a. Review PROT Plan Process
- b. Public Engagement Results
- c. Open Space Fee Findings
- d. NRPA Findings
- e. Draft Observations and Recommendations
- f. Draft Goals/Mission Statement
- g. Q&A



What is a PROT?

What is a park recreation open space and trail plan PROT?

A park system that is vital to the health, equality, and resiliency of a community, and is an indicator for a resident's **quality of life**. Through visioning, condition assessment, needs and planning, the PROT **gathers community input** to understand facilities and experiences sought to be fit, be inspired and be well.

This 9-month process results in a report, policy makers use to make decisions on how to spend funds on outdoor public resources for the **next decade**, including **acquisition, improvements, maintenance, and programming**.

SWT previous plan from 2009 was in combination with North Whitehall Township



**WHAT HAVE WE
BEEN UP TO?**

Planning Process

BACKGROUND INFORMATION

MISSION, GOALS, & OBJECTIVES

ADMINISTRATION

PERSONNEL

FACILITY/OPEN SPACE INVENTORY & ANALYSIS

FACILITY/EQUIPMENT MAINTENANCE

RECREATION PROGRAMS

FINANCING

RECOMMENDATIONS
& COST ESTIMATES

GRANTSMANSHIP

PROJECT START

IMPLEMENTATION



Township Parks

POCKET PARK

Bungalow Park
Cedar Creek Farms
Devon Circle Park
Fernwood Park
Grandlawn Park
Grove Street Park
Hampshire Court Park
Jacoby Park
Martha Nolan Memorial Park
South Whitehall Chase Park
Spring Valley Estates
Springhouse West Park
The Vistas Park
The Vistas Playground
Winchester Heights Park

TOTAL ACRES: 41+

COMMUNITY PARKS

Covered Bridge Park

TRAILS

Jordan Greenway

TOTAL ACRES: 165 +

OPEN SPACE

Beverly
Cedar Crest Gardens
Deerfield
Davis-Smith
Golden Oaks
Kohler Ridge Park
Parkland Drive
Stoneridge Terrace
Twin Grove
Wedgewood

TOTAL ACRES: 98 +

26 Township Parks

Public Engagement

- Methods include:
 - Engage with the study committee
 - Public Meeting and survey posters posted at Township parks
 - Hosted public meetings (April, June, and October)
 - Isett Booth at Movies in the Park (Aug. 12) (& Township engagement with surveys at various community other events – Allentown Band Concert)
 - Information on survey included in utility billing early in process; Newspaper article
 - Paper brochure was made available at Covered Bridge Park and the Township building
 - Online survey and paper brochure
 - *Key Person Interviews and Focus Group Meetings are in process.*



Survey Results

- Survey open: May 29, 2022
- Survey closed: August 31, 2022
- SurveyMonkey (online) and abbreviated version through paper brochure

South Whitehall Township Park, Recreation, Open Space, and Trail Plan

Public Survey: INTRODUCTION

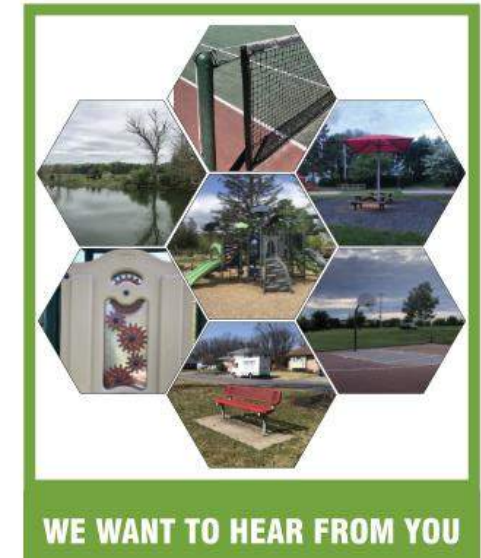
South Whitehall Township needs your help! The Township is developing a plan for South Whitehall Township parks, recreation, open space, and trails that will outline proposed improvements for the next ten years. This plan will guide the Township in seeking grant funding and allocating Township resources to make improvements.

The following survey will provide valuable information to develop a long-term vision for South Whitehall Township's parks, recreation, and open space. Please feel free to add comments or ideas if the most appropriate answer is not provided. Thank you for taking the time to help improve your community!

This survey will take approximately 15 minutes to complete.

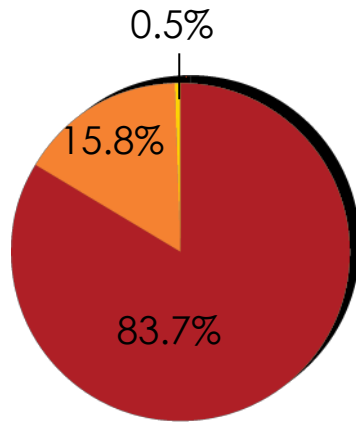
OK

793 Surveys completed
681 online respondents
112 paper copy respondents



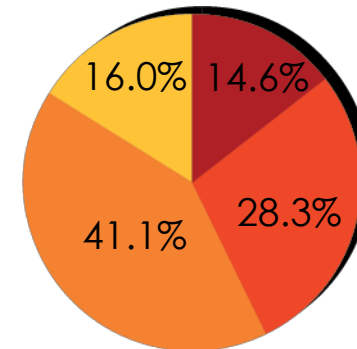
Are you a resident of SWT?

- Yes – 664 (83.7%)
- No – 125 (15.8%)
- Skipped – 4 (0.5%)

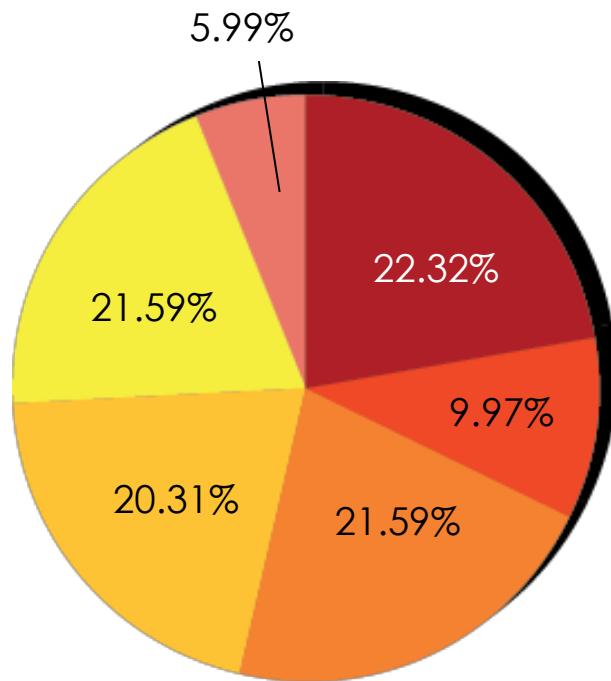


If so, how long have you been a resident of SWT?

- Less than 5 - 116 (14.6%)
- 5-15 - 224 (28.3%)
- 15+ - 326 (41.1%)
- Skipped - 127 (16.0%)



What is the total number of household members in each age range?



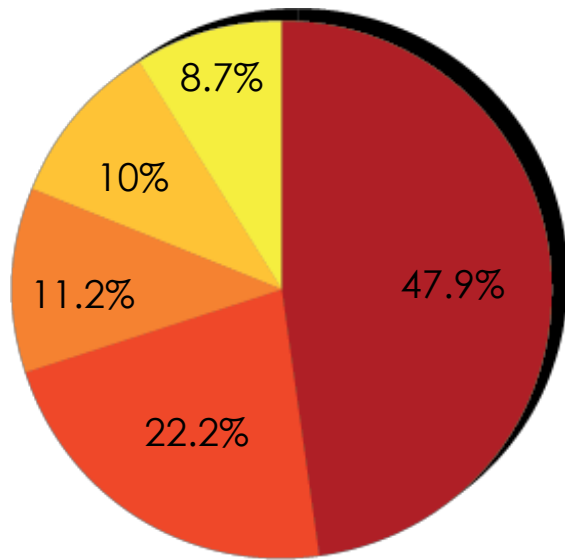
Survey Results

- 0-12: 365 (22.32%)
- 13-18: 163 (9.97%)
- 19-39: 353 (21.59%)
- 40-55: 332 (20.31%)
- 56-74: 324 (19.82%)
- 75+: 98 (5.99%)
- Skipped: 78 (n/a)

U.S. Census Pop. Breakdown

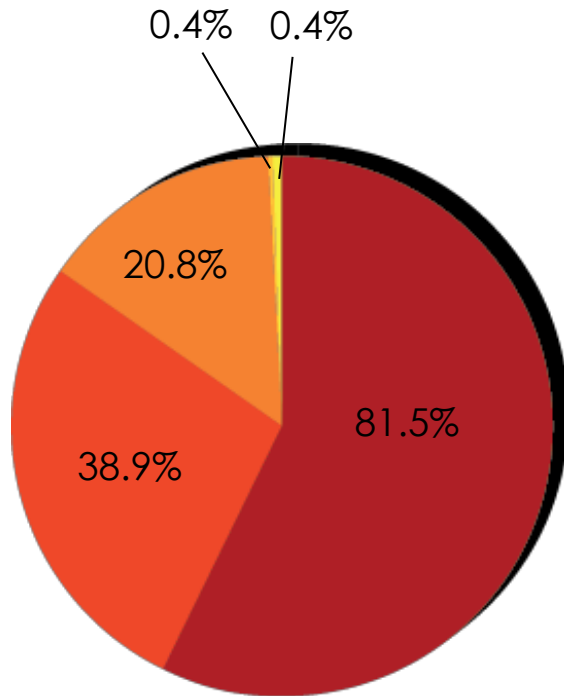
- Under 14: 18.17%
- 14-19: 5.55%
- 20-39: 21.62%
- 40-54: 17.76%
- 55-74: 25.21%
- 75+: 11.68%

How far do you routinely travel to participate in an outdoor recreation activity or event?



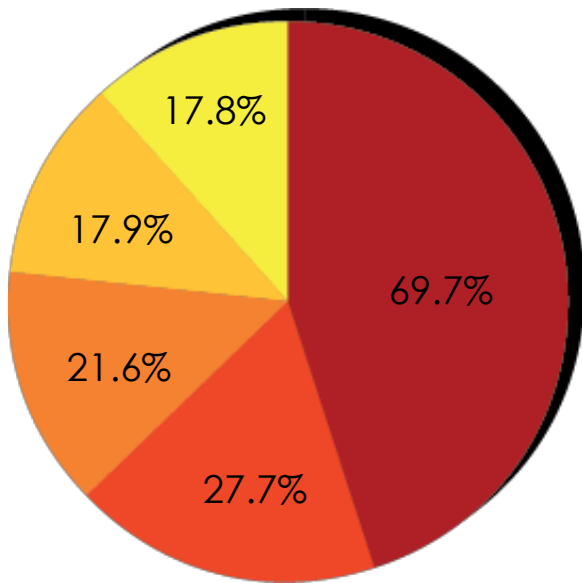
- 1-5 miles - 380 (47.9%)
- 5-10 miles - 176 (22.2%)
- Skipped - 89 (11.2%)
- 0-1 miles - 79 (10%)
- 10+ miles - 69 (8.7%)

How do you visit SWT parks?



1. By car **646 (81.5%)**
2. By foot **308 (38.9%)**
3. By bike **165 (20.8%)**
4. By public transportation **3 (0.4%)**
5. Other **3 (0.4%)**

What parks within SWT do you visit?



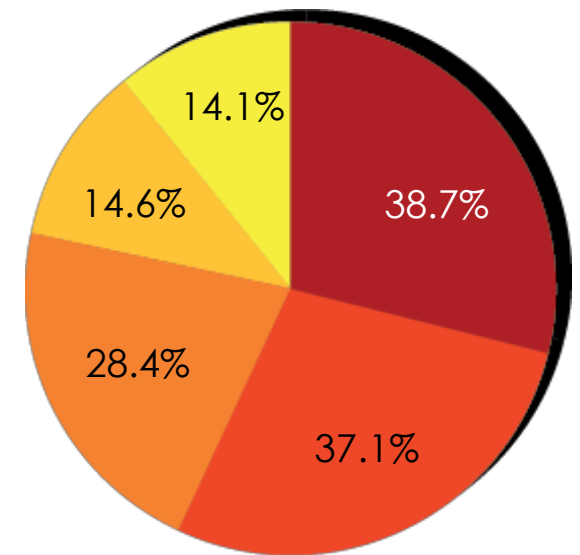
1. Covered Bridge Park - 553 (69.7%)
2. Cedar Creek Park - 220 (27.7%)
3. Jordan Greenway - 171 (21.6%)
4. Fernwood Park - 142 (17.9%)
5. Lehigh County Sports Fields -141 (17.8%)

What are the primary reasons that you use SWT parks?

1. Exercise / Fitness, Walk or bike for exercise, Walk your Dog.....	521
2. Simple Relaxation, enjoy the outdoors/nature.....	453
3. Play at the playgrounds.....	344
4. Sports Fields/Courts (baseball/soccer/softball/etc.).....	251
5. Public Programming or special events.....	243
6. Spend time with family / friends, participate in family activities.....	233
7. I/We don't visit parks (Answer Q9a)	12
8. Skipped.....	85
9. Attend Private Party.....	42
10. Other:_____.....	41

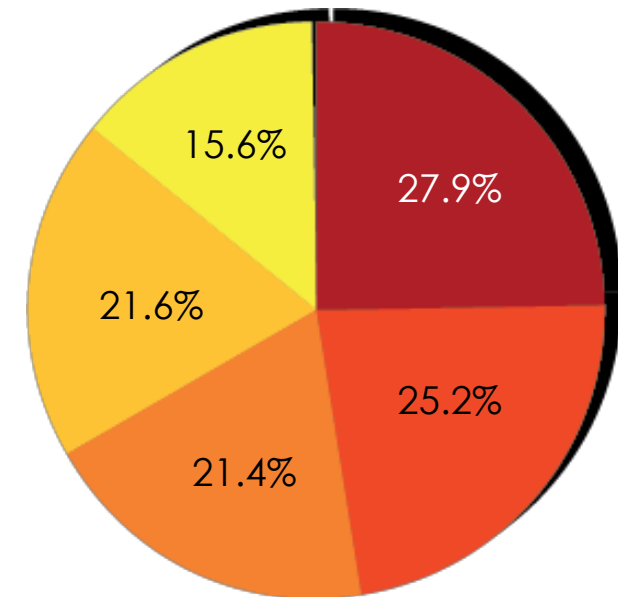
What events at SWT parks does your household attend?

1. Concerts in the park	307 (38.7%)
2. Holiday events	294 (37.1%)
3. Movies in the park	225 (28.4%)
4. Pavilion rentals for private parties	116 (14.6%)
5. I/we do not attend events at SWT parks	112 (14.1%)

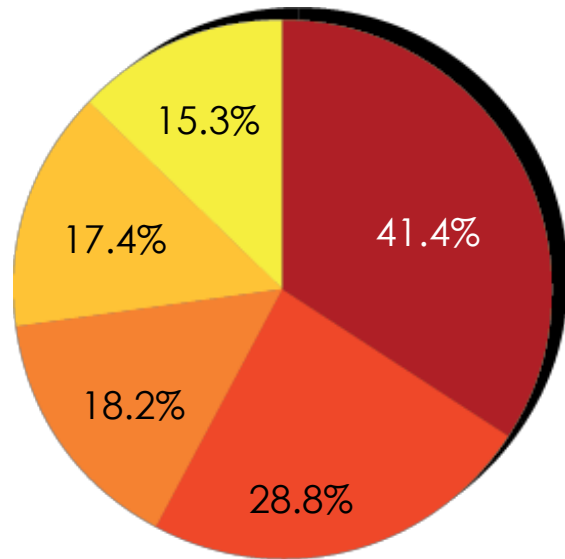


**Rank each of the following park activities which you either currently enjoy or would like to see added to SWT parks.
(Very Important)**

1. Swimming pool	221 (27.9%)
2. Playground expansion	200 (25.2%)
3. Nature center	171 (21.6%)
4. Recreation/community center	170 (21.4%)
5. Multipurpose field	124 (15.6%)



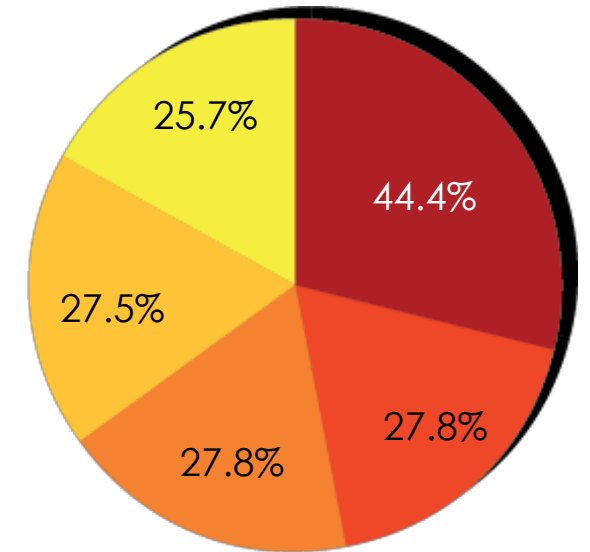
Rank each of the following park support elements which you either currently enjoy or would like to see added to SWT parks. (Very Important)



1. Walking trail **328 (41.4%)**
2. Restroom improvements **228 (28.8%)**
3. Lighting **144 (18.2%)**
4. Splash pad **138 (17.4%)**
5. Benches **121 (15.3%)**

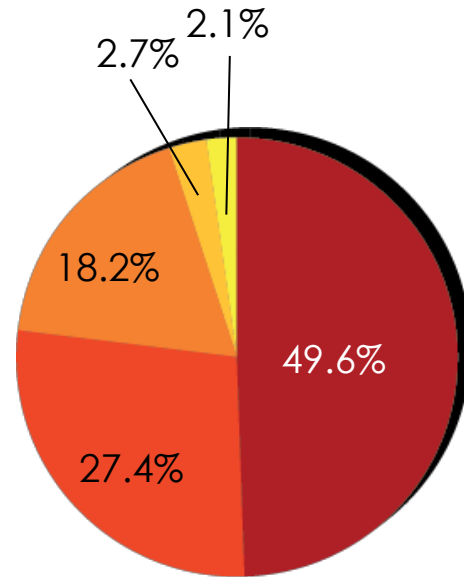
What additional programs would you like to see in SWT?

- Outdoor/environmental programs **352 (44.4%)**
- After school programs **220 (27.8%)**
- Inclusive programming (appealing to multiple age groups and abilities) **220 (27.8%)**
- Adult-centered programming **218 (27.5%)**
- Fitness classes **204 (25.7%)**



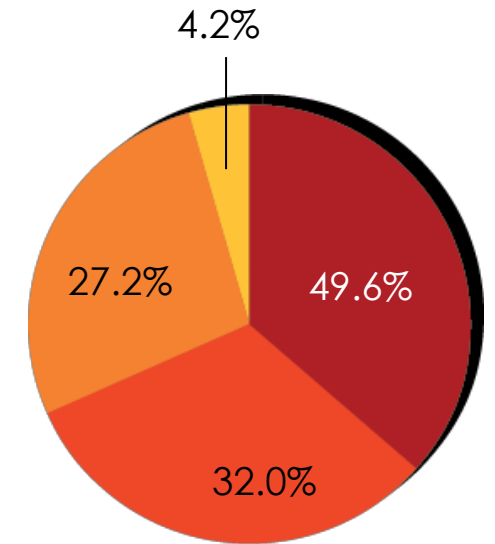
How would you rate the current maintenance of SWT parks?

- Good **393 (49.6%)**
- Excellent **217 (27.4%)**
- Skipped **145 (18.2%)**
- Poor **21 (2.7%)**
- Don't know **17 (2.1%)**



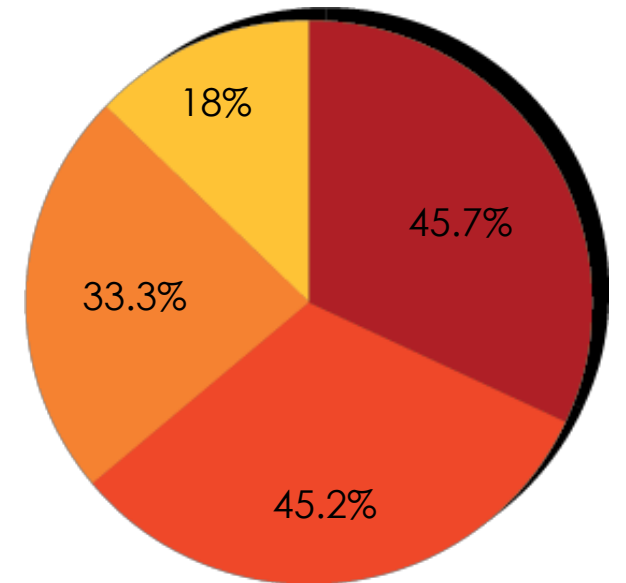
How do you feel SWT prioritizes parks and recreation maintenance?

- Medium **290 (36.6%)**
- Skipped **254 (32.0%)**
- High **216 (27.2%)**
- Low **33 (4.2%)**



How can parks in SWT be improved?

1. Upgrade parks	362 (45.7%)
2. Maintain existing parks	358 (45.2%)
3. Acquire new parks/open space	256 (33.3%)
4. Rebuild existing parks	143 (18%)



Open Space Fees Findings

Municipality	Size (Acres)	Population	Median Household Income (2020)	Open Space Fee
South Whitehall Township	11,040	21,135	\$ 85,540.00	\$2,500 per dwelling unit; Non-residential: 25 cents/SF
City of Allentown	11,520	121,156	\$ 43,816.00	Not Available
Lower Macungie Township	14,374	32,626	\$ 91,962.00	\$3,800
N. Whitehall Township	18,272	16,357	\$ 86,820.00	\$2,500
Salisbury Township	7,213	13,949	\$ 81,136.00	\$2,000
Upper Macungie Township	16,806	24,764	\$ 94,033.00	\$3500 per dwelling unit; Non-residential: \$3500 base fee + 20 cents/SF up to 1000,000SF, 10 cents up to 500,000 SF, 5 cents above 500,000 SF
Upper Milford Township	11,526	7,821	\$ 88,493.00	\$3,150
Upper Saucon Township	15,750	17,139	\$ 112,567.00	\$5,000
Whitehall Township	8,230	27,714	\$ 67,707.00	\$3,060

Draft Recommendation: South Whitehall's open space fees are lower compared to adjacent municipalities/local municipalities within Lehigh County; therefore, it is recommended that they explore raising their fees in order to stay competitive with local open space fees.

NRPA Findings

Park	Acres	Year Acquired	NRPA ITEMS											ADDITIONAL ELEMENTS																															
			Baseball	Softball	Basketball	Amphitheater	Golf	Field Hockey	Ice Skating	Multipurpose Field	Nature Center	Pickleball	Playground 2-5	Playground 5-12	Recreation/Handball/Squash	Recreation/Community Center	Senior Center	Skate Park	Swimming Pool	Tennis	Teen Center	Volleyball	Walking Cages	Hockey	Soccer	Walking Trail	Pavilion - open air	Benches	Picnic tables	Cooking Grills	Trash receptacles	Water station	Lighting	Restrooms	Bike rack	Storage shed	Concession stand	Natural Area	Pond / Lake	Disc Golf	Canoes				
POCKET PARKS																																													
Bungalow Park	0.70	2016		●								●																																	
Cedar Creek Farms Park	3.67	2005																							●																				
Devon Circle Park	2.32	1987										●																																	
Ferwood Park	10.00	1980	●	●	●						●	●																																	
Grandlawn Park	2.78	1970	●	●	●						●																																		
Grove Street Park	0.50	1975										●	●																																
Hampshire Court Prk	1.00	1979			●						●	●																																	
Jacoby Park	1.40	1975		●								●																																	
Martha Nolan Memorial Park	0.60	1969		●							●	●																																	
S. Whitehall Chase Park	2.40	1995		●							●	●																																	
Springhouse West Park	1.70	1986										●																																	
Spring Valley Estates Park	1.17	1995																																											
The Vistas - Park	7.63	2014		●																																									
The Vistas - Playground	0.40	2014										●	●																																
Winchester Heights Park	5.00	1994																																											

Conditions

- Excellent ●
- Good ●
- Fair ●
- Poor ●

Park	Acres	Year Acquired	NRPA ITEMS											ADDITIONAL ELEMENTS																																	
			Baseball	Softball	Basketball	Amphitheater	Golf	Field Hockey	Ice Skating	Multipurpose Field	Nature Center	Pickleball	Playground 2-5	Playground 5-12	Recreation/Handball/Squash	Recreation/Community Center	Senior Center	Skate Park	Swimming Pool	Tennis	Teen Center	Volleyball	Walking Cages	Hockey	Soccer	Walking Trail	Pavilion - open air	Benches	Picnic tables	Cooking Grills	Trash receptacles	Water station	Lighting	Restrooms	Bike rack	Storage shed	Concession stand	Natural Area	Pond / Lake	Disc Golf	Canoes						
OPEN SPACE																																															
Beverly Open Space	0.50	1975																																													
Cedar Crest Gardens Open Space	2.77	1986																																													
Deerfield Open Space	4.30	1991																																													
Golden Oaks Open Space	2.00	1987																																													
Parkland Drive Open Space	4.20	1976																																													
Stoneridge Terrace Open Space	1.40	1986																																													
Twin Grove Open Space	2.00	1984																																													
Wedgewood Open Space	3.00	1993																																													
COMMUNITY PARKS/TRAILS																																															
Covered Bridge Park	165.11	1974	●	●	●																																										
Jordan Greenway	14 Mi	1970																																													
Kohler Ridge Park	25.70	2018																																													

Conditions

- Excellent ●
- Good ●
- Fair ●
- Poor ●

NRPA Findings

Park	Acres	Year Acquired	NRPA ITEMS													ADDITIONAL ELEMENTS																														
			Baseball	Softball	Basketball	Amphitheater	Golf	Field Hockey	Ice Skating	Multipurpose Field	Nature Center	Pickleball	Playground 2-5	Playground 5-12	Racquetball/Handball/Squash	Recreation/Community Center	Senior Center	Skate Park	Swimming Pool	Tennis	Teen Center	Volleyball	Artting cages	Soccer	Hockey	Walking Trail	Pavilion - open air	Benches	Picnic tables	Cooking Grills	Trash receptacles	Water station	Lighting	Restrooms	Bike rack	Storage shed	Concession stand	Natural Area	Pond / Lake	Disc Golf	Camera					
POCKET PARKS																																														
Bunglowlow Park	0.70	2016			1							1																																		
Cedar Creek Farms Park	3.67	2005						2															2																							
Devon Circle Park	2.32	1987									1																																			
Fernwood Park	10.00	1980	3	3	1						1	1										1																								
Grandlawn Park	2.78	1970	1	1	1								1																																	
Grove Street Park	0.50	1975									1	1										1																								
Hampshire Court Prk	1.00	1979			1							1	1																																	
Jacoby Park	1.40	1975			1								1																																	
Martha Nolan Memorial Park	0.60	1969			1							1	1																																	
S. Whitehall Chase Park	2.40	1995			1							1	1										1																							
Springhouse West Park	1.70	1986										1																																		
Spring Valley Estates Park	1.17	1995																							1																					
The Vistas - Park	7.63	2014			1							3											3																							
The Vistas - Playground	0.40	2014										1	1																																	
Winchester Heights Park	5.00	1994			2																																									

Total
NRPA Standards
Difference

Park	Acres	Year Acquired	NRPA ITEMS													ADDITIONAL ELEMENTS																															
			Baseball	Softball	Basketball	Amphitheater	Community Garden	Dog Park	Golf	Field Hockey	Ice Skating	Multipurpose Field	Nature Center	Pickleball	Playground 2-5	Playground 5-12	Racquetball/Handball/Squash	Recreation/Community Center	Senior Center	Skate Park	Swimming Pool	Tennis	Teen Center	Volleyball	Artting cages	Soccer	Hockey	Walking Trail	Pavilion - open air	Benches	Picnic tables	Cooking Grills	Trash receptacles	Water station	Lighting	Restrooms	Bike rack	Storage shed	Concession stand	Disc Golf	Natural Area						
OPEN SPACE																																															
Beverly Open Space	0.50	1975																																													
Cedar Crest Gardens Open Space	2.77	1986																																													
Deerfield Open Space	4.30	1991																																													
Golden Oaks Open Space	2.00	1987																																													
Parkland Drive Open Space	4.20	1976																																													
Stoneridge Terrace Open Space	1.40	1986																																													
Twin Grove Open Space	2.00	1984																																													
Wedgewood Open Space	3.00	1993																																													
COMMUNITY PARKS/TRAILS																																															
Covered Bridge Park	165.11	1974	1	1	1										2																																
Jordan Greenway	14 Mi																																														
Kohler Ridge Park	25.70	2018																																													

Total
NRPA Standards
Difference

Parks: Observations

Compared to a typical agency with a population of 20,000 residents:

- ❖ SWT ahead in terms of active park acreage, basketball courts, flat fields and softball / baseball fields.
- ❖ Behind in tennis courts, pickleball courts and dog parks.
- ❖ Will change over the years with coming development.
- **Recently approved developments will be a mix:**
 - ❖ Attract diverse residents of all ages and income levels.
 - ❖ Age restricted and non-age restricted neighborhoods.
 - ❖ Have HOAs
 - ✓ Open space will be provided for new residents, but not active public parks.
 - ✓ New residents will look elsewhere for active parks.

Parks: Draft Recommendations

1. Continue creative, inclusive development of SWT's park system.

- ❖ Use LVPC data to consider population growth to determine need, potential locations for new facilities.
- ❖ Consider new recreational opportunity in the northeast section of the Township
 - ✓ Troxell Campus- 16 acres; *Currently no plans in place for Troxell Campus*
 - Northeast section
 - Contains former school building that can be used for recreation and senior programming.
 - Flat open space = Open for recreational opportunity (Ex: Pickleball, Multipurpose fields, etc)
 - Close to future Ridge Farms development

Parks: Draft Recommendations

- 2. Determine feasibility of developing open space areas as active/passive parks.**
 - ❖ Davis-Smith once it ceases being farmed?
- 3. Continue development of Jordan Creek Greenway Trail.**
 - ❖ Link parks to the trail via a network of on-road / off-road trails.
- 4. Review current Township maintenance levels and explore areas where design can reduce these requirements**
 - ❖ Reduce mowing requirements by planting % of land in existing open spaces
- 5. Explore possibility of school parks with Parkland School District.**
 - ❖ Enables public to use school grounds and facilities after school hours.

Parks: Draft Recommendations

6. Complete / update park master plans.

- ❖ Ensure the parks continue to respond to anticipated growth and community needs.

7. Identify potential location for pickleball courts.

- ❖ Popular request during public process.
- ❖ Potential locations:
 - ✓ The Vistas as per new park master plan
 - ✓ Winchester Park – Township looking to stripe for pickleball courts
 - ✓ Covered Bridge Park
 - ✓ Parkland High School
 - Outside school hours
 - ✓ Unused basketball courts
 - In a park with available parking
 - Located away from homes

Parks: Draft Recommendations

8. Identify potential locations for:

- ❖ Tennis courts
 - ✓ Parkland Area High School- 8 courts
 - Outside of school hours
- ❖ Dog Park
 - ✓ Covered Bridge park as per park master plan
 - Davis Smith – Dog Park
 - Would fencing be an issue with park's flooding?
- ❖ Explore locations in Township for a Splash Pad
- ❖ Additional seating at Jordan Creek Greenway Trail on SWT property
- ❖ Location for a Community Center

Parks: Draft Recommendations

9. Acknowledge non-SWT recreation opportunities:

- ❖ PASD schools
- ❖ Surrounding communities
 - ✓ Grange Park (Upper Macungie) spray park
 - ✓ Camp Olympic (Lower Macungie) pump track
 - ✓ Jordan Park (Allentown) skatepark
- ❖ County parks
 - ✓ Lehigh County Parkway East & West
 - ✓ Trexler Nature Preserve

Recreation Programs: Observations

Compared to a typical agency with a population of 20,000 residents:

- ❖ Significant, successful growth since the addition of a FT Recreation Manager.
- ❖ Comprehensive program offerings exhibit high level of creativity.
- ❖ Developing new, beneficial partnerships.
 - ✓ St. Luke's
 - ✓ Purina
 - ✓ Wildlands Conservancy
 - ✓ South Whitehall-based businesses
- ❖ PT Recreation Specialist added in 2022
 - ✓ PT status limits ability to accomplish more.
 - Program development
 - Program and event supervision and evaluation

Recreation Programs: Observations

Many programs open to multiple age groups.

- ❖ One program can be open to children, teens, adults and seniors.

Programs need dedicated indoor space.

- ❖ Program offerings, including for seniors, could grow significantly with dedicated indoor space.

Questions?

- ❖ How are programs developed?
- ❖ Is there a target group for each program?
- ❖ Are there competing programs in the area?

Recreation Programs: Observations

Complete Recreation Program Plan to identify:

- ❖ Potential targeted programming opportunities:
 - ✓ Pre-School & After School
 - ✓ Teens
 - ✓ Seniors
 - ✓ STEM
 - ✓ Disabled
- ❖ Existing programs and events in the area
- ❖ Optimal locations
- ❖ Price points
- ❖ Potential partners

Recreation Programs: Draft Recommendations

1. Complete / update park master plans.

- ❖ Updating Covered Bridge Park's 2014 plan could:
 - ✓ Consider improving parking, traffic controls for special events
 - ✓ Possible additional facilities for new programs.

2. Enter into an agreement with PASD that enables SWT to continue using school facilities for programming.

3. Consider schools as potential locations for special events.

- ❖ Confirm whether physical layout, parking, etc. at some schools may be more conducive to successful outdoor events.

Recreation Programs: Draft Recommendations

4. With PASD, offer SWT programs at Troxell campus.

- ❖ Cedar Crest Blvd. location provides indoor and outdoor space.
- ❖ Northeastern section of Township.
- ❖ Close to future Ridge Farms development.

5. Consider additional joint programming opportunities with Upper Macungie and North Whitehall Townships.

6. Continue creative approach to program development.

- ❖ Continue to identify contractors and partners to provide programs that meet goals and objectives identified in the Recreation Program Plan.
- ❖ Apply for awards that acknowledge the quality and value of SWT programs.

Administration: Observations

SWT P & R administration currently:

- ❖ 1 FT Recreation Manager
 - ✓ Responsible for Parks & Recreation Department's operations.
 - Program and event development and management
 - Grants
 - Finance and budgeting
 - Park development
 - Personnel
 - Athletic field permitting
 - Coordinates park maintenance with Public Works
 - Heavy workload
- ❖ Secretary
 - ✓ Shared with Public Works
 - Limited due to heavy PW workload
 - Schedules pavilions
- ❖ 1 PT Recreation Specialist
 - ✓ Assists in development and operation of recreation programs and events.
 - ✓ PT status limits ability to assist in department's operation and share workload with Recreation Manager.

Administration: Draft Recommendations

1. Confirm Secretary's P & R responsibilities

- ❖ Could assume some tasks from Manager.
 - ✓ Field permitting
 - ✓ Work orders
 - ✓ Resident inquiries

2. Expand PT Recreation Specialist to a FT position

- ❖ Focus on program development, management and operations.
- ❖ Estimated salary range: \$40,000 to \$45,000.



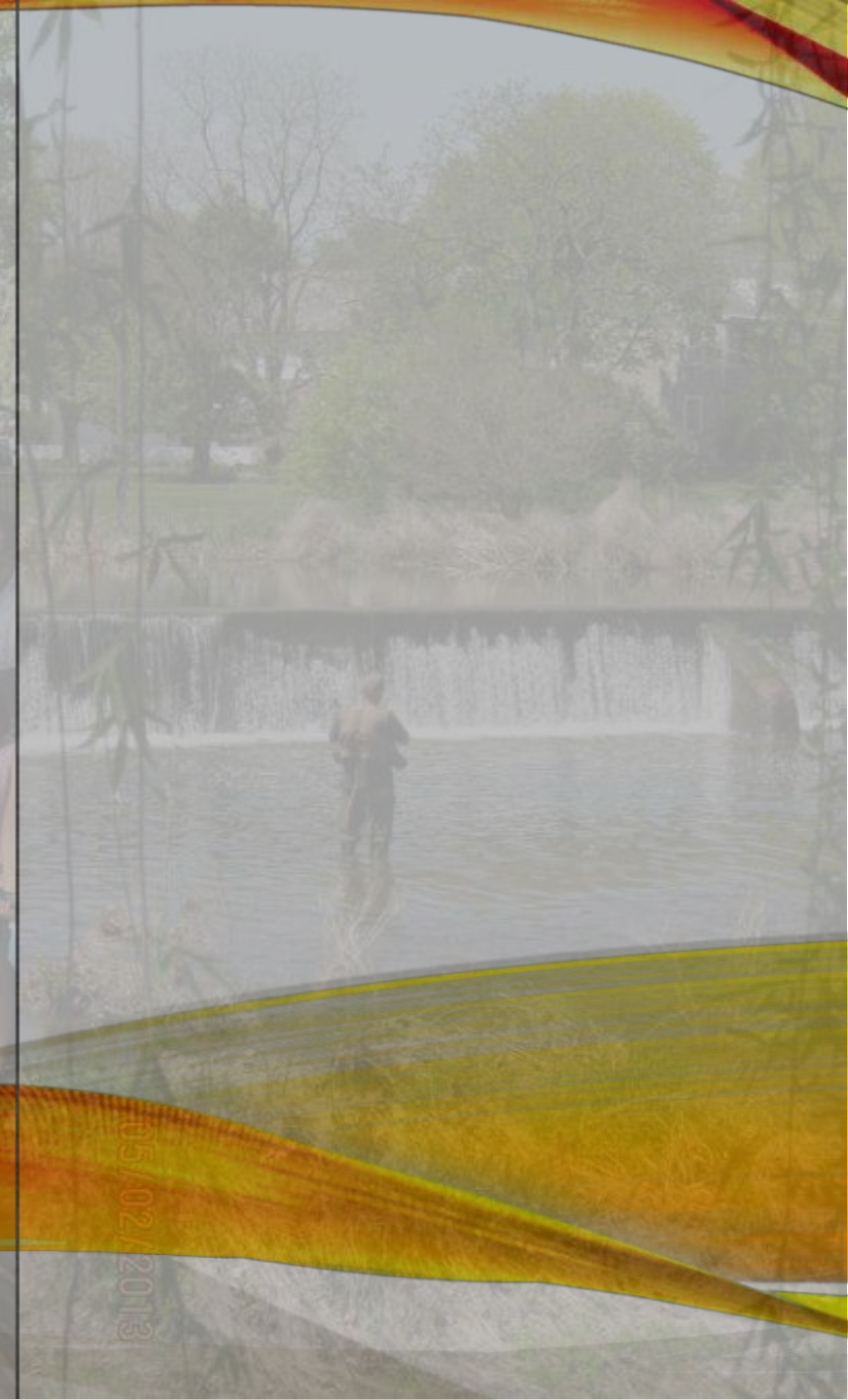
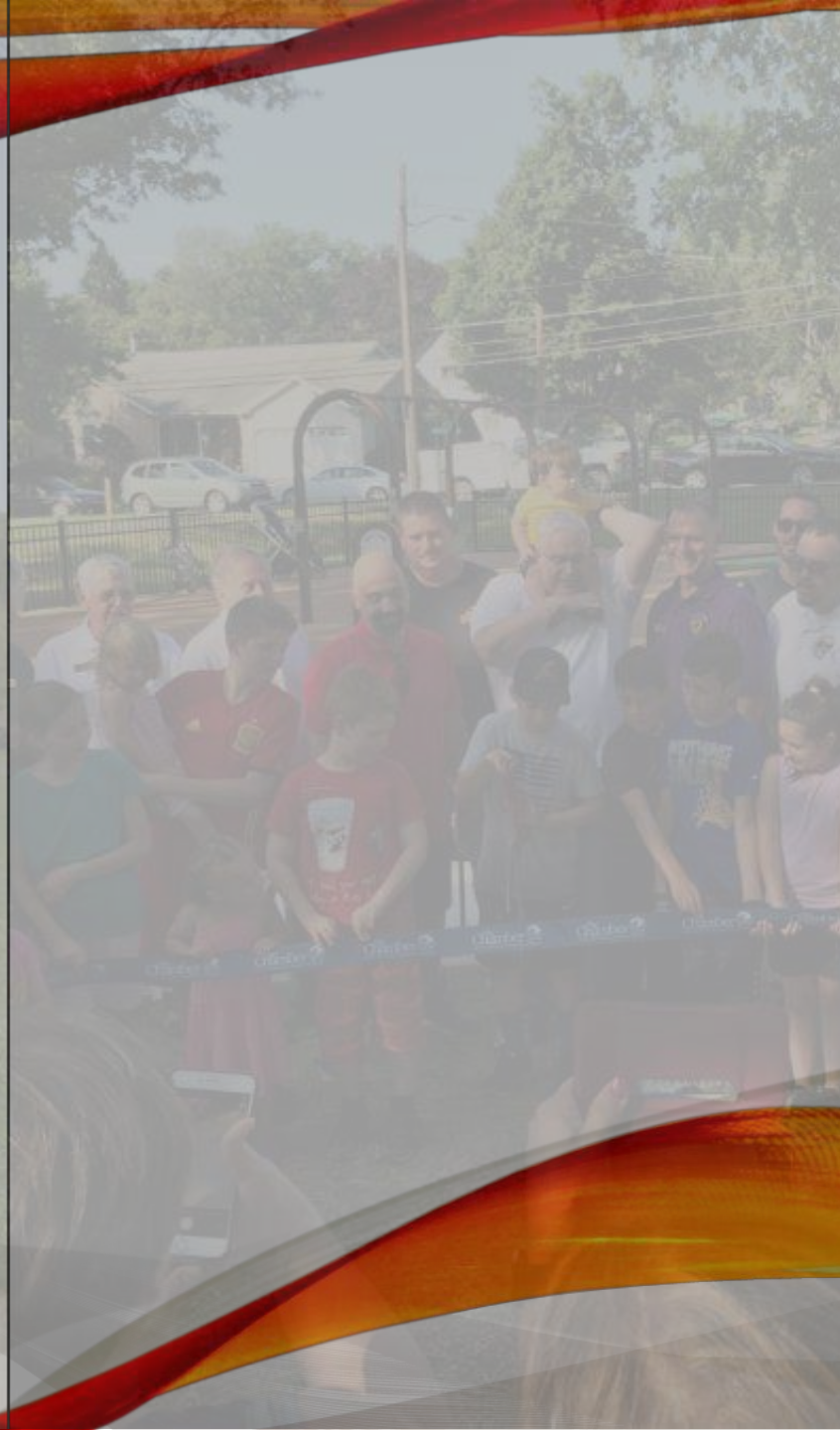
Draft Mission Statement

The South Whitehall Township Parks and Recreation Department strives to enrich the quality of life to all citizens and visitors by providing quality facilities, open space, trails, and diverse recreation programs for people of all ages and abilities.

Draft Goals

- Develop and maintain a well-balanced system of active and passive activities within the Township's parks and trails to encourage healthy lifestyles and encourage community involvement.
- Sustainably manage the park, recreation, open space and trail system to ensure long term viability for future generations.
- Support South Whitehall Township in its substantial commitment of human and financial resources for parks, recreation, open space and trails.
- Continue the development of the Jordan Creek Greenway as a recreational and open space spine thru the Township.
- Seek cooperative ventures with other public and private entities to further the diverse recreational opportunities for residents.
- Continue to engage the community to understand what programs residents seek.

Q & A



05/02/2013

05/02/2013

CONTACT INFORMATION

Thank you...

Updates and Contact information:

South Whitehall Township Website: www.southwhitehall.com

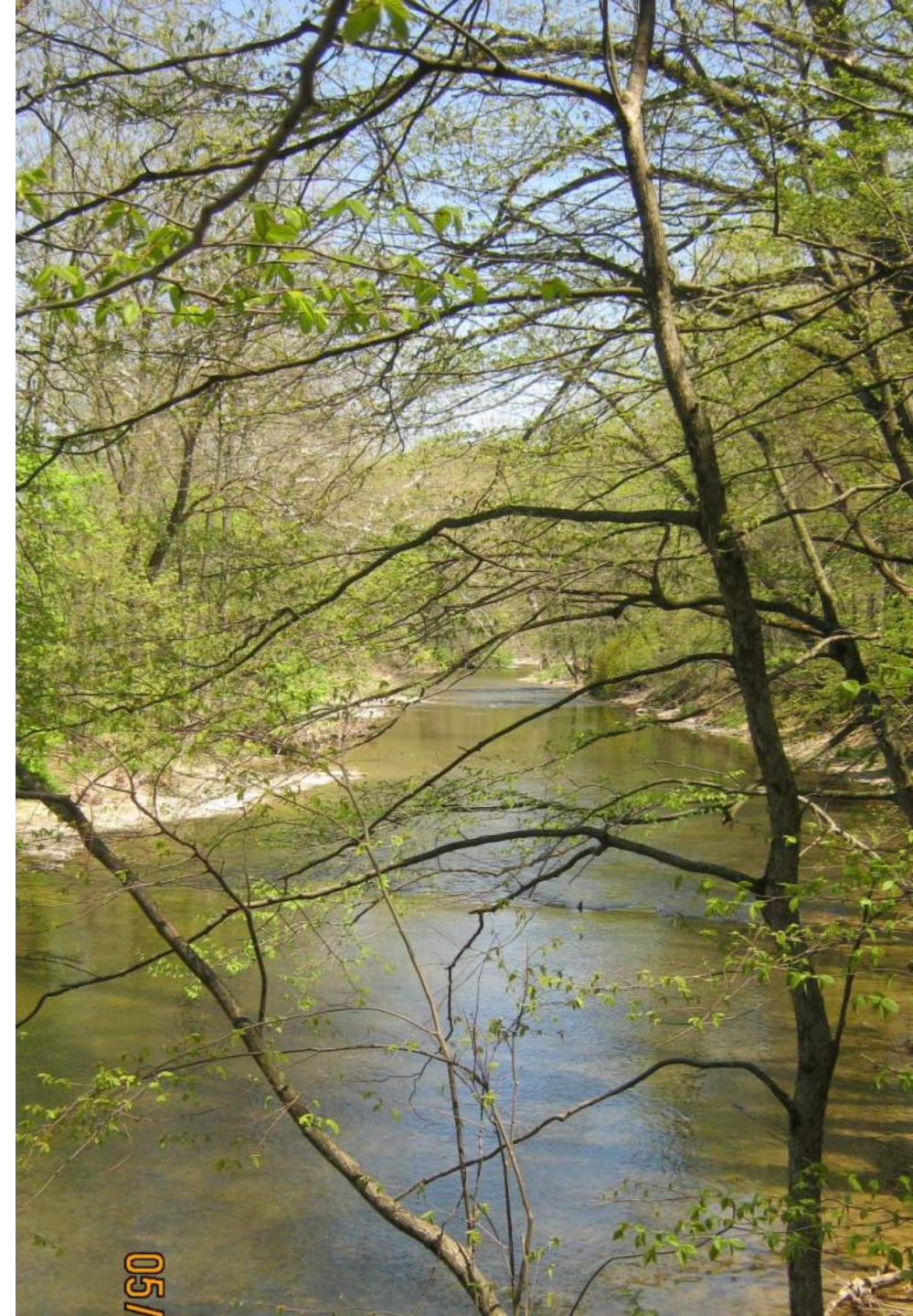
Park and Recreation Director:

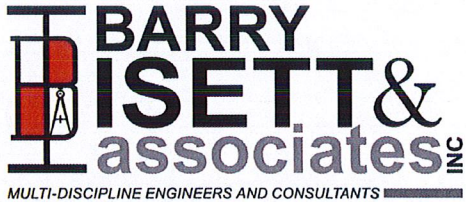
Mike Kukitz, kukitzm@southwhitehall.com 610-398-0401

Consultant Team:

Bryan Smith, bsmith@barryisett.com 610-398-0904

Ashley Eichlin, aeichlin@barryisett.com





85 South Route 100, Allentown, PA 18106
610.398.0904 610.481.9098
barryisett.com

Date: 10/4/2022
Project #: 1091421.000
Service Task:

SWT PARK RECREATION OPEN SPACE AND TRAIL PLAN PUBLIC MEETING # 3 SIGN IN
October 4, 2022 @ 7:00 pm

NAME	POSITION/ROLE	EMAIL ADDRESS
JOHN+CONNIE WESTLAKE	RESIDENT	we1327@aol.com
DON SHRETSLEY	RESIDENT	1411 HAMPTON ROAD
MARC BASIST	RESIDENT	807 Pinnacle Drive
OLIVIA MARBLE	JOURNALIST	oliviama@highvalleynews.com
JAELYN KUCINSKI	RESIDENT	JAKLYN@Yahoo.com
LEE BERNHARD	RESIDENT	
DIANE KELLY	COMMISSIONER	Kellyd@southwhitehall.com
MONICA HODGES	COMMISSIONER	Hodgesm@southwhitehall.com

Sign In